

TO: Kristina Doan, ISBE
Ann Freiburg, IDHS
Colleen Cunningham, IDHS
Jennifer Grissom, IDHS
All CFC Managers
Andria Goss, Cook County DCFS
Davette Clark-Johnson, CPS
Kelsey Badger, Erikson Institute's DCFS Intact Program
Allison Lowe-Fotos, Ounce of Prevention Fund
Carmen Garcia, Ounce of Prevention Fund
Karen Berman, Ounce of Prevention Fund

DATE: January 15, 2019

RE: FY 2019 Q1 Developmental Screening Report

Enclosed within are Child Find developmental screening reports and maps reflecting the number of children reported as screened from July 1, 2018 through September 30, 2018 throughout the State of Illinois.

TABLE OF CONTENTS

Narrative	2
Sample Form	4
Directions for Completing Form	5
Data Mappings	8
Screenings Reported by ZIP Code	14
Screenings Reported by Month	27
Screenings Reported by Agencies Represented	32
Screenings Reported by Screening Tool Utilized	37

This report, as well as reports reflecting prior years, is made publicly available at on our website at <https://www.childfind-idea-il.us/Screening.aspx>. If you have any questions or concerns about the enclosed information, please feel free to reach out via the contact form on our website at <https://www.childfind-idea-il.us/Contact.aspx> or call (800) 851-6197, option 2.

Best Regards,



Adam Morton
Child Find Project Coordinator

Child Find Project Data Collection Mappings

Background

Since 1998, the Illinois State Board of Education (ISBE) has operated the Child Find Project (Child Find), funded through Individuals with Disabilities Education Act Part B, Preschool Discretionary funds to develop and disseminate public awareness materials to Local Education Agencies (LEAs), Special Education Cooperatives, and the Child and Family Connections (CFC) offices.

The Child Find Project, managed by a single Program Coordinator, collects data on the number and location of developmental screenings taking place across Illinois for children between 0 to 5 years of age. A developmental screening is the use of screening tools to track the development of young children across multiple domains. Child Find receives:

- Data from the 25 CFC sites across Illinois. CFCs are the system point of entry for Early Intervention under the Illinois Department of Human Services (IDHS), and are required to report data to Child Find. CFCs receive data from local school districts, with the exception of Chicago Public School (CPS) District #299, where data is reported directly to Child Find.
- Quarterly data on screenings from all health departments reporting to IDHS, which is obtained from the Cornerstone data entry system (Cornerstone).
- Department of Children and Family Services (DCFS) Cook County for children birth to five who are in care. These screenings are conducted by Erikson Institute (Erikson) /DCFS Early Childhood developmental specialists or by the DCFS Integrated Assessment program.
- Monthly data from Erikson/ DCFS Early Childhood Intact Program for Cook, Northern, Central and Southern regions. Erikson/DCFS Early Childhood developmental specialists administer developmental screenings to children ages birth through three entering the foster care system in Cook County and coordinates assessments statewide. The data is not separated by zip codes but reported by the four DCFS regions.

Through the support of the Early Learning Council, the *0-5 Child Find Screening Data Collection Form* (Data Collection Form) used by reporting entities was updated in 2016 in an effort to gather improved information on referral counts, screening tools used, type of reporting program/entity and the type of referral. Among these improvements, a new field was added to include the zip code of locations performing developmental screenings. The inclusion of this field allows for the mapping of portrays where screenings occur, identify potential gaps in reporting and referrals and make the data useful for stakeholders.

Mappings

Child Find has partnered with the Illinois Early Childhood Asset Map (IECAM) to display, through geo-mapping, where developmental screenings are occurring as reported on the Data Collection Form. Developed in 2006, IECAM is funded by ISBE and the IDHS to provide information on existing services, the demographics of young children and their families, and state resources that serve young children. Child Find provides quarterly reports to IECAM which in turn provides mappings on 0-5 Child Find Screenings:

- Total Screened by CFC region
- Total Referred by CFC region

- Total Screened by Zip Code
- Total Referred by Zip Code

Limitations and exclusions

There is no data system to support unduplicated, disaggregated child level data collection, but the addition of the zip code field draws a broader picture of screenings occurring in the state. Even with the stated improvements to the Data Collection Form, limitations remain:

- Reporting to CFCs is voluntary and reporting entities include: school districts, Local Education Agencies (LEAs), Special Education Cooperatives, Regional Offices of Education, child care providers, Head Start/Early Head Start, Home Visiting programs, Early Intervention providers, health departments, health care providers, DCFS, IDHS Family Case Management, multi-funded programs, and Women, Infants and Children.
- CFCs 8, 9, 10 and 11 serve the City of Chicago but do not conduct screening events – Chicago Public Schools (CPS) #299 coordinates all screenings in these regions. It is up to CPS to report the screenings conducted, and data is not broken down by CFC region or even zip code.
- Reporting entities submit data manually through paper forms. CFCs vary greatly in the frequency and method of reporting data to Child find: Some CFCs email forms to the Project Coordinator as forms are received and other CFCs collect forms throughout a quarter before submitting them all at once via US Mail or fax.
- Delayed reporting from entities to CFCs impacts the timeliness of data to Child Find. CFCs do not all report information to Child Find in regular intervals.
- Data collection is time consuming and complex for both reporting entities and CFCs. Data is often inconsistent and unreliable because not all relevant fields are completed and mathematical miscalculations are recorded in fields. As of May 1, 2018, Child Find is piloting an electronic data collection system with two CFCs. This system would notify reporting entities when a mistake has been entered, prompting a correction before data submission is allowed.
- IDHS does not report data on developmental screenings by zip code. Rather, quarterly Cornerstone data is reported to Child Find in an aggregate format. This constitutes a significant sector of data that cannot be mapped.
- The data is not available in real-time but delayed by at least one quarter.
- The zip code on the Data Collection Form refers to where the screening occurred, not necessarily the home zip code of the children receiving the screening.

Even with limitations, the mappings make the data transparent and provides utility for stakeholders as a quality improvement process. As state agencies, programs, and communities continue to employ developmental screenings as a tool to support children’s development and school readiness, these mappings visually display areas in the state that might be underreporting screenings and need additional supports to increase screenings and referrals. Further, the wide dissemination of the mappings raise awareness of Child Find which may lead to better reporting by both entities and CFCs. Additional fields were added to the Data Collection Form beyond the zip code and future mappings are possible in the future.

**0-5 CHILD FIND
SCREENING DATA COLLECTION FORM**

Please refer to the directions when completing this form.

SECTION I: IDENTIFYING INFORMATION

Current Date: _____	Month/Year of Screenings: _____	CFC Submitting Form: _____
Name of Screening Agency: _____		
Type of Program/Entity ¹ : _____	Zip Code of Locations of Screenings: _____	
Screening Tool(s) used: _____		
Contact Person's Name: _____	Phone Number: _____	
Email Address: _____		

If the screening was part of a shared screening event, please check the following box:

SECTION II: SCREENING INFORMATION

Report Totals								
Total Children Screened	Age 0-11 months	Age 12-23 months	Age 24-35 months	Age 36-47 months	Age 48-60 months	Age 61+ months	Not Referred	Total Referred

Screenings of Children involved with DCFS		
# of Children in Intact Family Services Screened	# of Children of Teen Wards Screened	# of Children in Foster Care Screened

SECTION III: SCREENING RESULTS – REFERRAL COUNTS²

Report Totals for Children Ages 0 – 35 Months								
# Referred to EI	# Referred to LEA (ECSE)	# Referred to EHS	# Referred to PI (center-based)	# Referred to Child Care Program	# Referred to HV	# Referred to Other Services	# Referred to Multiple Services	# Referred for Rescreening

Report Totals for Children Ages 36 – 60 Months							
# Referred to LEA (ECSE)	# Referred to PFA	# Referred to HS	# Referred to Child Care Program	# Referred to HV	# Referred to Other Services	# Referred to Multiple Services	# Referred for Rescreening

Please fax or email completed form(s) by _____ (*insert timeframe*) to your local Child and Family Connections (CFC) office at the following contact information: _____.

You may find your local CFC office by going to the Illinois Department of Human Services office locator at www.dhs.state.il.us. If you have questions regarding this form, please contact the Child Find Project at 1-800-851-6197.

¹ Child Care Provider (CC), Head Start/Early Head Start (HS/EHS), Home Visiting (HV), Multi-Funded Program (MFP), Child and Family Connections (CFC), School District or Local Education Agency (LEA), Early Intervention (EI) Provider, Health Department (HD), Health Care Provider (HC), Women, Infants and Children (WIC), Illinois Department of Children and Family Services (DCFS) or Family Case Management (FCM).

² The following are abbreviations used in SECTION III: EI = Early Intervention; EHS = Early Head Start; PI = Prevention Initiative; HV = Home Visiting; PFA = Preschool for All; and HS = Head Start.

DIRECTIONS FOR COMPLETING 0-5 CHILD FIND SCREENING, REPORTING AND DATA COLLECTION FORM

The Illinois State Board of Education (ISBE) operates the Child Find Project (the “Project”). The Project is funded through IDEA Part B, Preschool Discretionary funds to develop and disseminate public awareness materials to Local Education Agencies (LEAs), Special Education Cooperatives, and the Child and Family Connections (CFC) offices. One activity of the Project is to collect data on the number and location of developmental screenings taking place across the State of Illinois for children between 0 and 5 years of age. The purpose of the 0-5 Child Find Screening, Reporting and Data Collection Form (the “Form”) is the collection of said data by the Project. If your program administers developmental screenings, you should report screening data to the Project using the Form. This applies to developmental screenings only and not to other types of screenings, such as those for vision or hearing. Agencies are required to complete each section of the Form.

The following are certain definitions that may be useful when completing the Form:

Health Department – A certified public health department of a county or the City of Chicago that strives to meet the public health needs of its jurisdiction.

Health Care Provider – A primary care physician, clinic, etc.

Home Visiting – A voluntary program serving pregnant women and children up to the age of 5 that promotes positive parenting practices and builds healthy parent-child relationships, which makes them an essential strategy for reducing child abuse and neglect, improving health outcomes for mothers and children, and increasing school readiness. Home visiting services use evidence-based, intensive, outcome-driven models that promote parent-child attachment; provide developmental screening, monitoring, and referrals; and provide linkages to community resources and services. Additional information pertaining to home visiting in Illinois can be found at <http://www.igrowillinois.org/>.

Multi-Funded Program – A program receiving separate funds from two or more program funding streams that are integrated or blended in order to pay for total program expenditures.

SECTION I: IDENTIFYING INFORMATION

This information allows the tracking of locations of screenings that occur, what programs or entities are involved in screenings, at what frequency screenings occur in a particular area, and who participates in screening activities.

Current Date – Insert the date the screening form is completed.

Month/Year of Screening – For cumulative reporting, insert the month and year the screenings took place.

CFC Submitting Form – CFCs should insert their CFC #, if a CFC is submitting a completed form.

Name of Screening Agency – Insert the name of the agency or provider undertaking the screening. Please note that such an agency or provider may include, but is not limited to, the following: Child Care Provider (CC); Head Start/Early Head Start (HS/EHS); Home Visiting (HV); Multi-Funded Program (MFP); Child and Family Connections (CFC); School District or Local Education Agency (LEA); Early Intervention (EI) Provider; Health Department (HD); Health Care Provider (HC); Women, Infants and

Children (WIC); Illinois Department of Children and Family Services (DCFS); or Family Case Management (FCM).

This information is gathered for data collection purposes only. If the screening is a joint effort between two or more CFCs or two or more school districts, indicate all CFCs and school districts involved in the joint effort, in order to show the area in which screenings are taking place. If a joint screening takes place with a CFC and a school district, the screenings will be attributed to the CFC or school district based on the ages of the children screened. Separate reports may be submitted if easier on reporting entities.

Type of Program/Entity – Insert the type of program or entity that describes the Screening Agency. Options include the following: Child Care Provider (CC); Head Start/Early Head Start (HS/EHS); Home Visiting (HV); Multi-Funded Program (MFP); Child and Family Connections (CFC); School District or Local Education Agency (LEA); Early Intervention (EI) Provider; Health Department (HD); Health Care Provider (HC); Women, Infants and Children (WIC); Illinois Department of Children and Family Services (DCFS); or Family Case Management (FCM).

Zip Code of the Locations of Screenings – Identify the zip code of the location of the screening event. One form should be submitted per event, as such, only one zip code should be entered here.

Screening Tool – Identify name of Developmental Screening tool(s) administered (e.g., ASQ3, ASQ-SE, DIAL, Brigance, other) by listing all that apply on the Form. Do not include other screenings performed such as Vision, Hearing, etc.

Contact Person (Name, Phone Number and Email Address) – Insert the name, telephone number and email address of the individual in charge of the screening session.

Name of Agency – List agency(ies) or individual provider(s) conducting the screening activity(ies), if screening event is community-wide or a joint-effort.

SECTION II: SCREENING INFORMATION

This information allows the tracking of the number of children screened and their age at the time of screening. Please note that the data for Section II refers to the total number of children screened (and is not separated out by zip codes as in Section I above).

Total Children Screened – Total number of children screened during event of cumulative monthly report.

Age 0-61+ Months – In the appropriate box, indicate the number of children by age who were screened.

Not Referred – Children who were screened but no referral was needed.

Total Referred – Children who were screened and a referral was needed.

The “Total Children Screened” count in Section II of the Form should equal the number of children referred *plus* the number of children not referred.

For purposes of the Form, a **Referral** occurs when a provider completes a screening and provides

information on how to connect families to a service provider that can meet the child and family's needs as indicated on the screening. Guidance on *referring families* may be found at the websites for (i) ExceleRate Illinois (including, the following link: <http://www.excelerateillinoisproviders.com/docman/resources/91-three-steps-to-screening/file>) and (ii) U.S. Department of Health and Family Services—Office of Administration for Children and Families for *Birth to 5: Watch Me Thrive!* (including, the following link: https://www.acf.hhs.gov/sites/default/files/ece/ece_providers_guide_march2014.pdf)

For purposes of data related to the screenings of children involved with DCFS (which is collected in the second table in Section II), please note the following:

of Children in Intact Family Services Screened – refers to the number of children screened who are involved with DCFS but are not in DCFS protective custody and are residing with their families as part of DCFS's Intact Families program.

of Children of Teen Wards Screened – refers to the number of children screened whose parents are wards of DCFS.

of Children in Foster Care Screened – refers to the number of children screened who are in DCFS care and residing with a foster family.

SECTION III: SCREENING RESULTS – REFERRAL COUNTS

The information submitted here allows the tracking of referrals made for children ages 0-35 months and 36-50 months.

Indicate the number of children referred for further evaluation in the appropriate referral count box identified. If a referral type is not listed, please indicate the name of the agency(ies) receiving referral(s) and the number of children involved. Please note that the numbers used in Section III will overlap and will not always match-up to the number used in the category of "Total Referred" in Section II above.

Referred to Other Services – Indicate the number of children referred to community based programs/agencies (i.e., speech, hearing, vision).

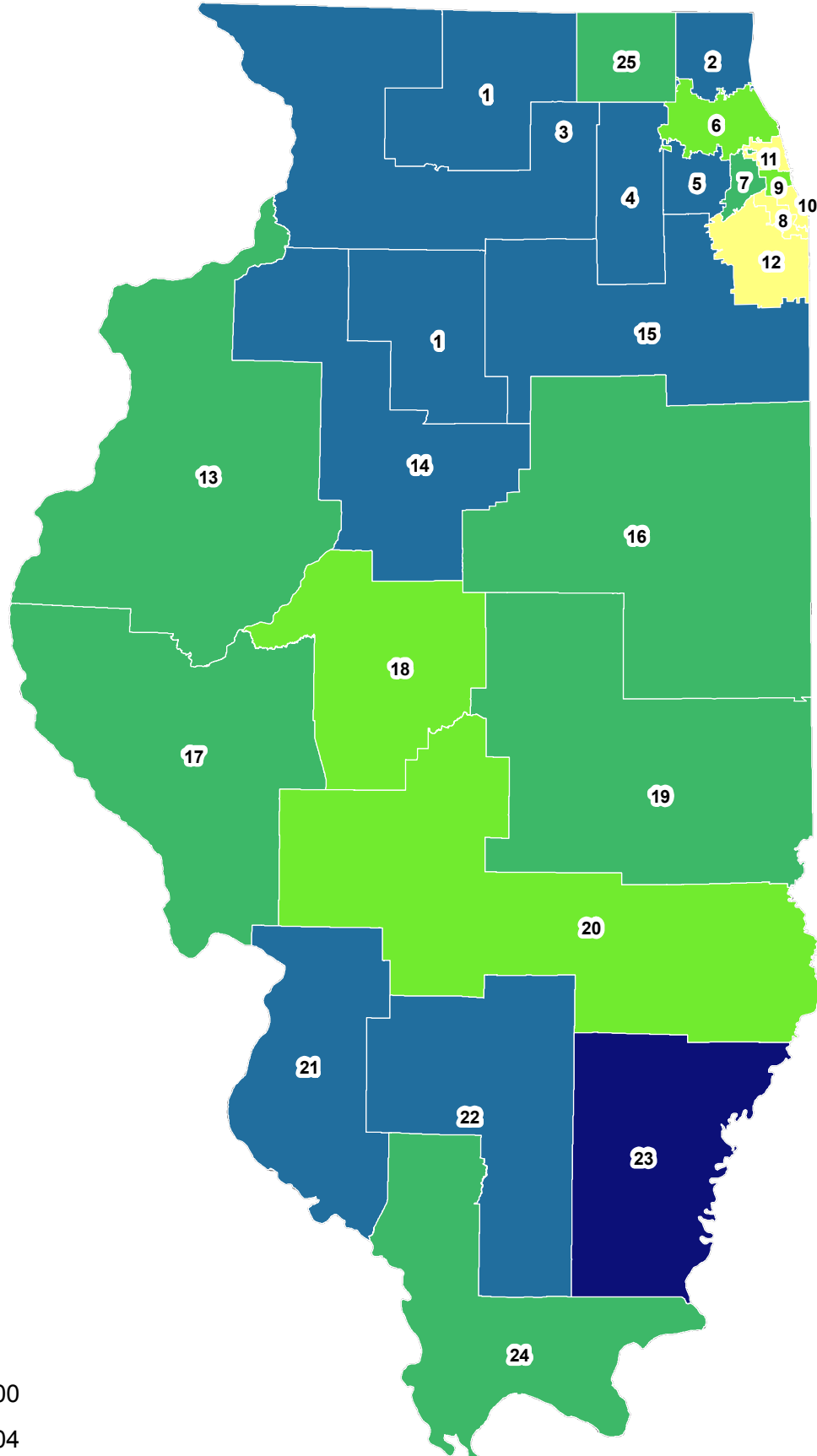
Referred for Rescreening – Indicate the number of children who did not score a concern on the screening, but are determined to benefit from a repeat screening at a later date (due to parent report of functioning variance, unable to screen, other concerns screener may have, etc.).

Referred to Multiple Services – If more than one of the other categories in this Section III has been checked, then also check "Referred for Multiple Services". *Please note that some children may be referred to multiple services and we want to know how many children present like that.*

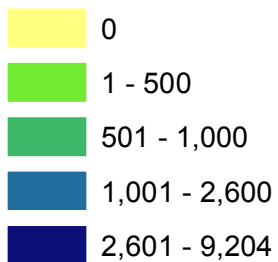
Please **fax or email** completed reports to the local Child and Family Connections (CFC) office, attention Local Interagency Council (LIC) Coordinator. The LIC Coordinator is responsible for collecting all 0-5 Screening Collection forms relating to screening activities for children 0-5 years of age occurring in the service area. These reports are forwarded monthly to the State's Child Find Project Coordinator for statewide analysis and data compilation.

Age 0-5 Child Find Screening FY2019 Q1

Total Screened by CFC region



Total screened

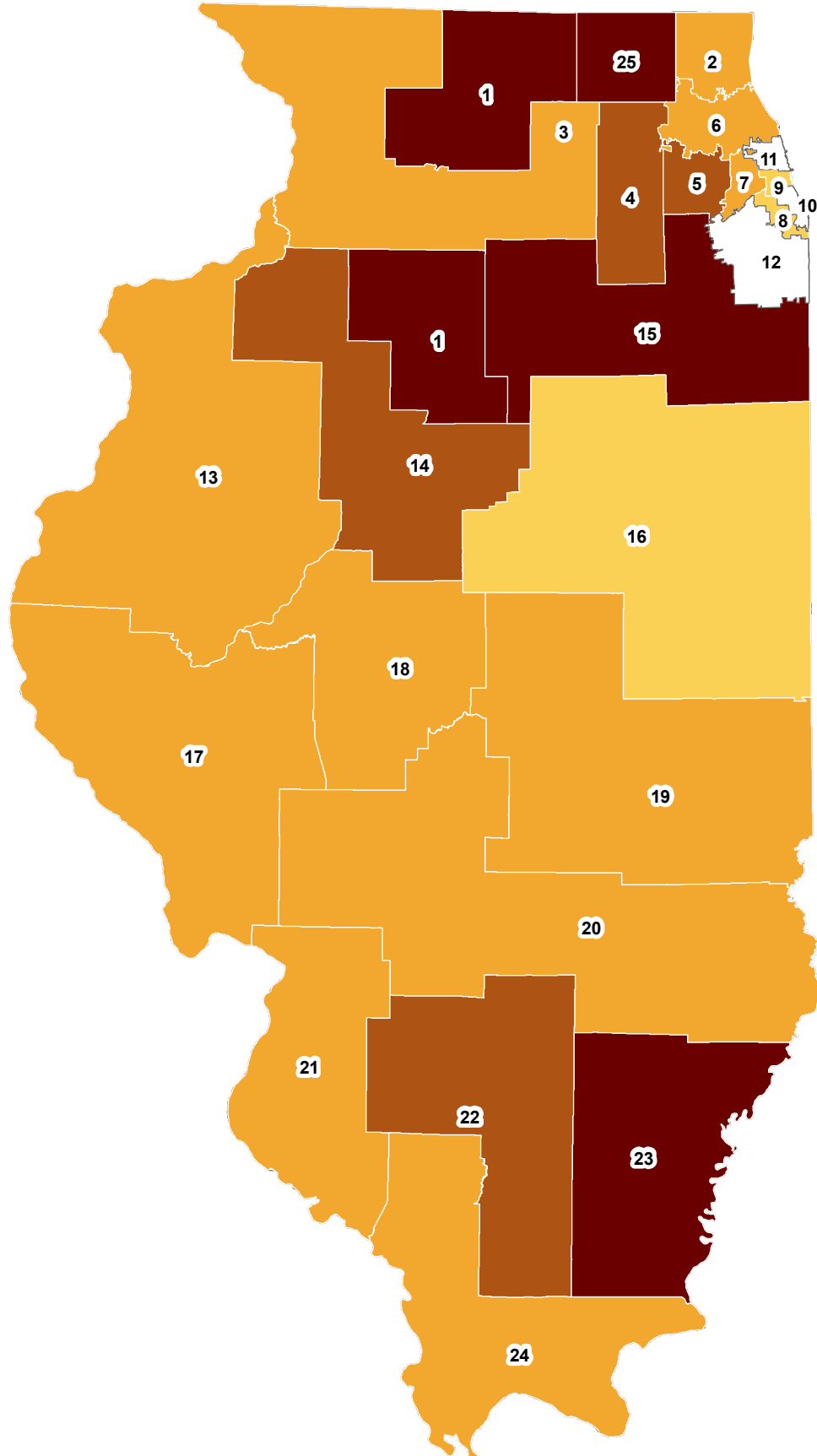


State total: 33,501

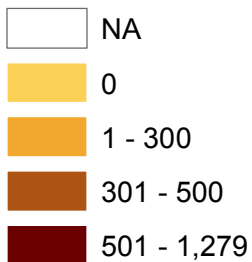


Notes: Data doesn't include children screened by CPS, CHDC, and DCFs as they don't have CFC information.

Age 0-5 Child Find Screening FY2019 Q1 Total Referred by CFC region



Total referred



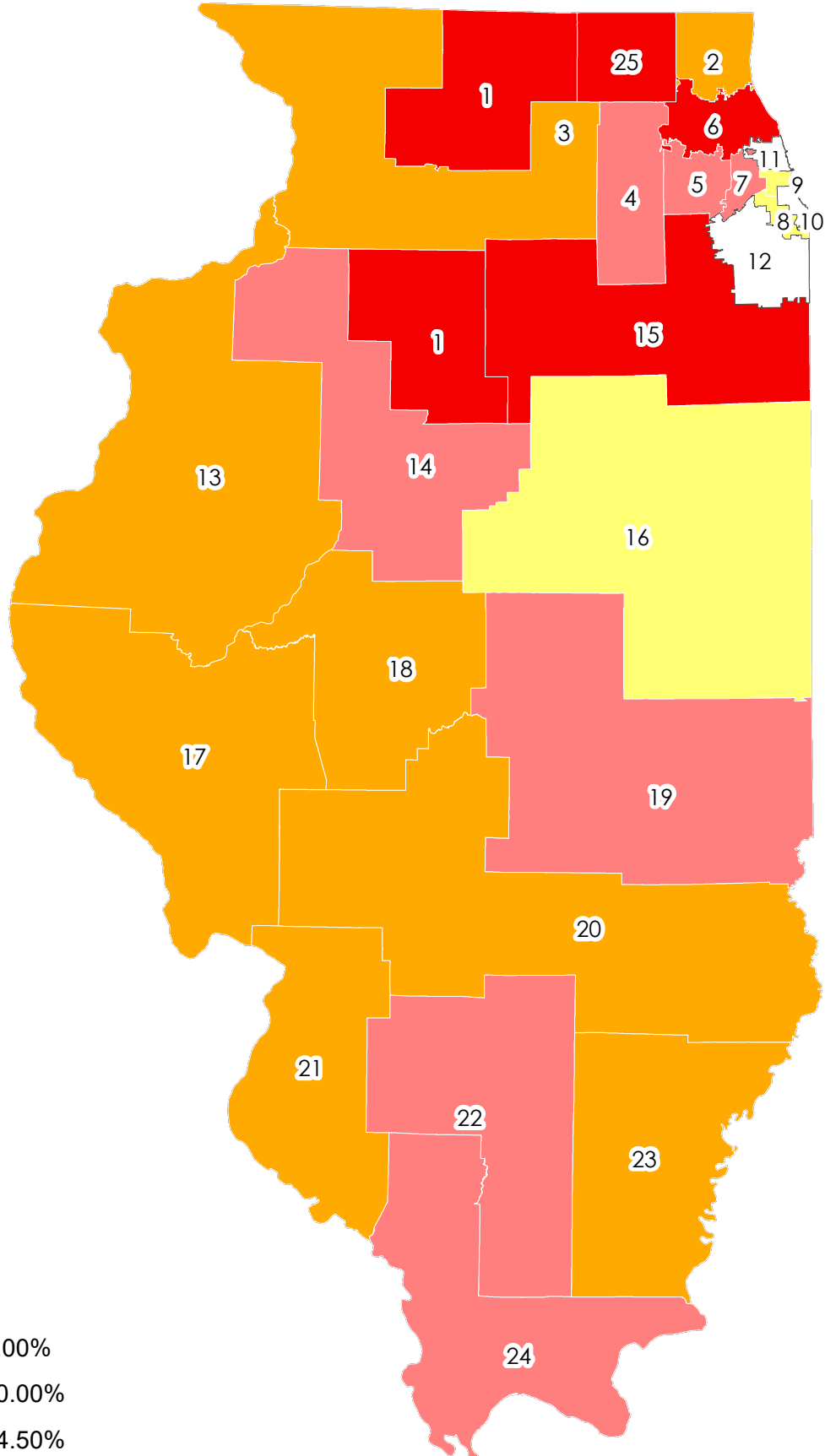
State total: 6,658



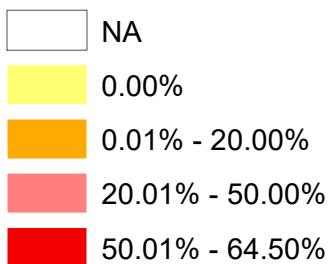
Notes: Data doesn't include children screened by CFS, CHDC, and DCFS as they don't have CFC information.

Age 0-5 Child Find Screening FY2019 Q1

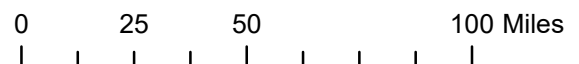
Percent of children (Total Referred/Total Screened)



Percent

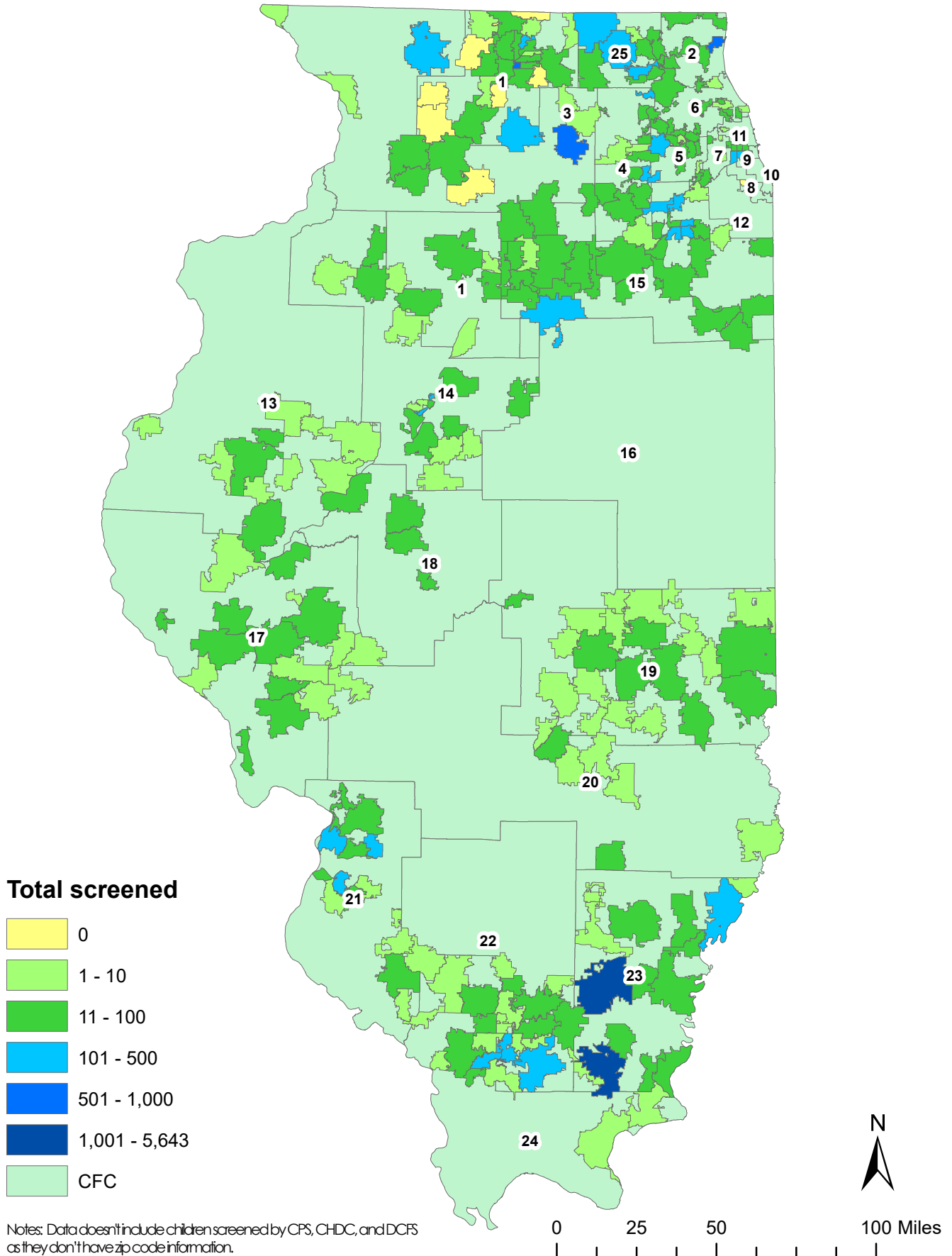


State average: 22.60%

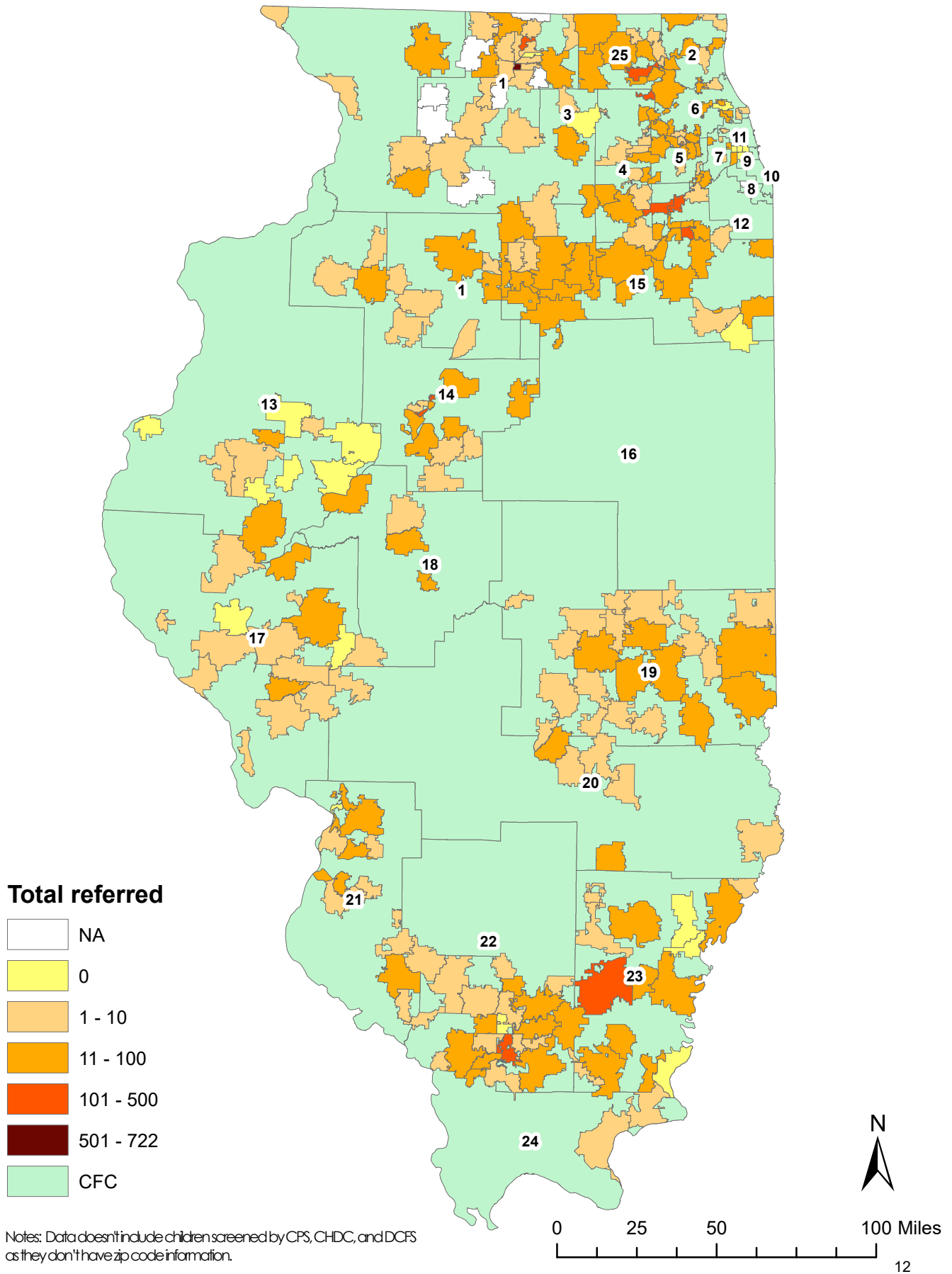


Notes: Data doesn't include children screened by CFS, CHDC, and DCF as they don't have CFC information.

Age 0-5 Child Find Screening FY2019 Q1 Total Screened by Zip Code

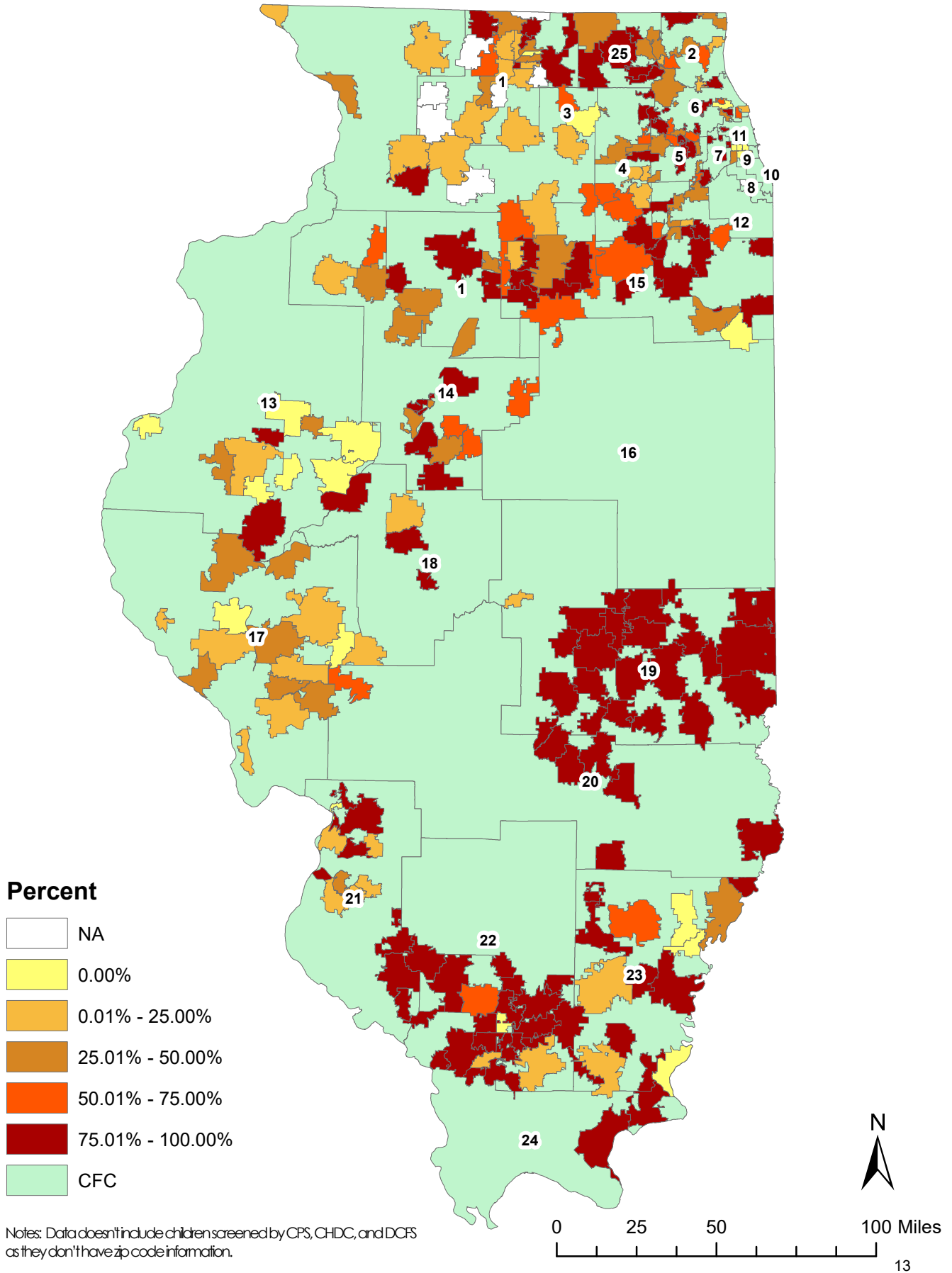


Age 0-5 Child Find Screening FY2019 Q1 Total Referred by Zip Code



Age 0-5 Child Find Screening FY2019 Q1

Percent of children (Total Referred/Total Screened) by Zip Code



Screenings Reported by CFC/CPS/DCFS and ZIP / FY2019 Q1

Zip Code	Total Screened	Screenings of Children involved with DCFS						Not Referred	Total Referred	# of Children Ages 0 to 3 Referred to										# of Children Ages 3 to 5 Referred to					Sub-Totals												
		Ages (in Months)								In Intact Family Services	Children of Teen Wards	In Foster Care	LEA EI (ECSE)	PI (center-based)	Child Care Program	HV	Other Services	Multiple Services	Rescreening	LEA (ECSE)	PFA	HS	Child Care Program	Other HV Services	Multiple Services	Rescreening	Ages 0-35 mos.	Ages 36-61+ mos.									
CFC #01	Child & Family Connections, Access Services of Northern Illinois, 1752 Windsor Rd, Ste 102, PO Box 16390, Loves Park, IL 61132-6390 - Dee Dee Lowery																																				
61008	36	0	0	0	20	16	0	7	29	0	0	2	0	0	0	0	0	0	0	0	0	0	0	0	0	0	0	7	0	0	0	0	22	3	3	0	36
61010	5	0	0	0	4	1	0	3	2	0	0	0	0	0	0	0	0	0	0	0	0	0	0	0	0	0	0	0	2	0	0	0	0	0	0	5	
61012	7	0	0	1	4	2	0	0	7	0	0	0	0	0	0	0	0	1	0	0	0	0	0	0	0	0	1	3	0	0	0	3	3	2	1	6	
61016	0	0	0	0	0	0	0	0	0	0	0	0	0	0	0	0	0	0	0	0	0	0	0	0	0	0	0	0	0	0	0	0	0	0	0	0	
61024	4	0	0	0	4	0	0	0	4	0	0	2	0	0	0	0	0	0	0	0	0	0	0	0	0	0	4	0	0	0	0	0	0	0	0	4	
61030	0	0	0	0	0	0	0	0	0	0	0	0	0	0	0	0	0	0	0	0	0	0	0	0	0	0	0	0	0	0	0	0	0	0	0	0	
61061	36	0	0	3	26	7	0	33	3	0	0	0	0	0	0	0	0	0	0	0	0	0	0	0	0	0	3	0	0	0	0	0	0	0	3	33	
61063	0	0	0	0	0	0	0	0	0	0	0	0	0	0	0	0	0	0	0	0	0	0	0	0	0	0	0	0	0	0	0	0	0	0	0	0	
61064	0	0	0	0	0	0	0	0	0	0	0	0	0	0	0	0	0	0	0	0	0	0	0	0	0	0	0	0	0	0	0	0	0	0	0	0	
61068	127	0	0	7	86	34	0	117	10	0	0	0	0	0	0	0	0	0	0	0	0	0	0	0	0	0	10	0	0	0	0	0	0	0	7	120	
61072	57	0	0	6	10	15	26	37	20	0	0	1	0	5	0	0	0	0	0	0	0	1	1	1	1	4	11	0	0	0	0	0	0	6	51		
61073	6	1	1	1	2	1	0	1	5	0	0	1	0	1	0	0	0	0	0	0	0	0	0	0	0	0	1	0	0	0	0	0	0	0	3	3	
61079	0	0	0	0	0	0	0	0	0	0	0	0	0	0	0	0	0	0	0	0	0	0	0	0	0	0	0	0	0	0	0	0	0	0	0		
61080	0	0	0	0	0	0	0	0	0	0	0	0	0	0	0	0	0	0	0	0	0	0	0	0	0	0	0	0	0	0	0	0	0	0	0		
61084	0	0	0	0	0	0	0	0	0	0	0	0	0	0	0	0	0	0	0	0	0	0	0	0	0	0	0	0	0	0	0	0	0	0	0		
61088	21	0	0	1	15	4	1	7	14	0	0	0	0	0	0	0	0	0	1	0	0	0	0	0	0	0	0	11	0	0	0	2	0	1	20		
61101	68	11	13	13	5	24	2	66	2	1	0	2	0	0	0	0	0	0	0	0	0	0	1	1	0	0	0	0	0	0	0	0	0	1	37	31	
61102	50	10	9	17	3	10	1	41	9	0	0	0	1	0	0	0	0	0	0	0	0	0	1	1	6	6	0	0	0	0	0	6	0	36	14		
61103	27	6	11	10	0	0	0	23	4	0	0	0	2	0	0	0	0	0	0	0	0	0	0	0	0	0	0	0	0	0	0	0	0	0	27	0	
61104	786	7	27	25	444	278	5	64	722	17	0	36	9	0	0	0	0	0	0	0	0	11	34	701	122	0	0	0	0	440	326	59	727				
61107	33	8	10	15	0	0	0	23	10	0	0	0	1	0	0	0	0	0	0	0	0	9	0	0	0	0	0	0	0	0	0	0	33	0			
61108	31	5	7	19	0	0	0	29	2	0	0	0	1	0	0	0	0	0	0	0	0	1	0	0	0	0	0	0	0	0	0	0	31	0			
61109	49	12	13	24	0	0	0	47	2	0	0	5	1	0	0	0	0	0	0	0	0	1	0	0	0	0	0	0	0	0	0	0	49	0			
61111	33	4	2	6	12	9	0	23	10	0	0	9	1	0	0	0	0	0	0	0	0	3	0	0	0	0	0	0	0	0	0	6	12	21			
61112	0	0	0	0	0	0	0	0	0	0	0	0	0	0	0	0	0	0	0	0	0	0	0	0	0	0	0	0	0	0	0	0	0	0			
61114	1	0	1	0	0	0	0	1	0	0	0	0	0	0	0	0	0	0	0	0	0	0	0	0	0	0	0	0	0	0	0	1	0	0			
61115	119	7	5	8	63	36	0	13	106	0	0	0	1	0	0	0	0	0	0	7	1	0	11	99	0	0	0	0	11	0	20	99					
61301	0	0	0	0	0	0	0	0	0	0	0	0	0	0	0	0	0	0	0	0	0	0	0	0	0	0	0	0	0	0	0	0	0	0			
61310	0	0	0	0	0	0	0	0	0	0	0	0	0	0	0	0	0	0	0	0	0	0	0	0	0	0	0	0	0	0	0	0	0	0			
61325	1	0	0	0	1	0	0	0	1	0	0	0	0	0	0	0	0	0	0	0	0	0	0	1	0	0	0	0	0	0	0	0	0	1			
61326	16	0	0	0	13	3	0	0	16	0	0	0	0	0	0	0	0	0	0	0	0	0	13	0	0	0	0	0	0	0	3	0	16	0			
61345	1	0	0	0	1	0	0	0	1	0	0	0	0	0	0	0	0	0	0	0	0	0	0	0	0	0	0	0	0	0	1	0	1	0			
61348	0	0	0	0	0	0	0	0	0	0	0	0	0	0	0	0	0	0	0	0	0	0	0	0	0	0	0	0	0	0	0	0	0	0			

Screenings Reported by CFC/CPS/DCFS and ZIP / FY2019 Q1

Zip Code	Total Screened	Ages (in Months)						Not Referred	Total Referred	Screenings of Children involved with DCFS			# of Children Ages 0 to 3 Referred to								# of Children Ages 3 to 5 Referred to						Sub-Totals					
		0-11	12-23	24-35	36-47	48-60	61+			In Intact Family Services	Children of Teen Wards	In Foster Care	EI	LEA (ECSE)	PFA	HS	Child Care Program	Other Services	Multiple Services	Rescreening	LEA (ECSE)	PFA	HS	Child Care Program	Other Services	Multiple Services	Rescreening	Ages 0-35 mos.	Ages 36-61+ mos.			
61354	2	0	0	0	1	1	0	0	2	0	0	0	0	0	0	0	0	0	0	0	0	2	0	0	0	0	0	0	0	0	0	2
61356	44	0	2	7	23	12	0	7	37	0	0	0	0	0	0	0	0	0	2	0	0	35	0	0	0	0	0	0	0	9	35	
61362	7	0	1	0	3	3	0	5	2	0	0	0	0	0	0	0	0	0	0	0	2	0	0	0	0	0	0	0	1	6		
61540	7	0	0	0	3	4	0	5	2	0	0	0	0	0	0	0	0	0	0	0	2	0	0	0	0	0	0	0	0	7		
NONE	216	158	37	20	1	0	0	0	0	0	0	0	0	0	0	0	0	0	0	0	0	0	0	0	0	0	0	0	215	1		
TOTAL	1790	229	139	183	744	460	35	552	1022	18	0	58	17	6	0	0	0	0	0	11	2	32	93	871	128	0	0	27	463	343	551	1239

CFC #02 Child & Family Connections, Lake County Health Department, 3010 Grand Ave, 2nd Floor, Waukegan, IL 60085 - Donna Musser

60002	52	0	0	1	27	24	0	6	46	0	0	2	0	1	0	0	0	0	0	0	0	19	40	0	0	0	0	0	14	1	1	51
60015	1	0	0	0	1	0	0	0	1	0	0	0	0	0	0	0	0	0	0	0	1	0	0	0	0	0	0	0	0	0	1	
60030	27	0	0	8	10	9	0	7	13	0	0	0	0	2	0	0	0	0	0	0	8	5	0	0	0	1	0	3	8	19		
60048	12	0	0	0	5	7	0	5	7	0	0	0	0	0	0	0	0	0	0	0	0	0	0	0	0	0	0	0	0	12		
60084	55	0	0	0	35	20	0	14	41	0	0	0	0	0	0	0	0	0	0	0	0	32	0	0	0	8	2	3	0	55		
60085	581	163	195	223	0	0	0	392	43	6	0	17	68	2	6	0	0	0	13	18	0	0	0	0	0	0	0	0	581	0		
60089	73	0	0	0	47	21	5	59	14	0	0	0	0	0	0	0	0	0	0	0	14	0	0	0	0	0	0	0	0	73		
60099	11	0	0	0	5	6	0	6	5	0	0	0	0	0	0	0	0	0	0	0	5	0	0	0	0	0	0	0	0	11		
NONE	639	567	43	24	3	2	0	0	0	0	0	0	0	0	0	0	0	0	0	0	0	0	0	0	0	0	0	0	634	5		
TOTAL	1451	730	238	256	133	89	5	489	170	6	0	19	68	5	6	0	0	0	13	18	0	47	77	0	0	0	9	16	7	1224	227	

CFC #03 Child & Family Connections, Regional Office of Education for Carroll, Jo Daviess, & Stephenson Co., 27 S State Ave, Ste 101, Freeport, IL 61032 - Angela Hodges

60115	646	272	122	59	110	76	0	559	87	0	0	1	0	4	0	0	0	0	0	0	1	1	75	75	2	0	0	11	13	0	453	186
60145	6	0	0	1	3	2	0	2	4	0	0	0	0	0	0	0	0	0	0	0	0	1	0	0	0	0	0	0	3	1	5	
60178	1	0	0	0	1	0	0	1	0	0	0	0	0	0	0	0	0	0	0	0	0	0	0	0	0	0	0	0	0	1		
60548	17	0	0	2	11	4	0	5	12	0	0	0	0	0	0	0	0	0	0	0	2	10	0	0	0	0	0	0	2	15		
61021	53	24	6	6	8	9	0	49	4	0	0	0	2	0	0	0	0	0	0	0	2	0	0	0	0	0	0	0	36	17		
61025	7	3	1	2	1	0	0	6	1	0	0	0	0	0	0	0	0	0	0	0	0	1	0	0	0	0	0	0	6	1		
61032	213	170	23	3	7	10	0	167	46	0	0	0	2	0	0	0	1	0	0	0	26	0	0	4	13	0	0	0	196	17		
61071	53	0	0	0	35	18	0	0	53	0	0	1	0	0	0	0	0	0	0	0	5	48	0	0	0	0	0	0	0	53		
61074	6	0	0	0	2	4	0	4	2	0	0	0	0	0	0	0	0	0	0	0	0	0	0	0	0	0	0	0	6			
61081	90	25	27	25	13	0	0	84	6	0	0	0	4	0	0	0	0	0	0	0	2	0	0	0	0	0	0	0	77	13		

Screenings Reported by CFC/CPS/DCFS and ZIP / FY2019 Q1

Zip Code	Total Screened	Ages (in Months)						Not Referred	Total Referred	Screenings of Children involved with DCFS			# of Children Ages 0 to 3 Referred to								# of Children Ages 3 to 5 Referred to					Sub-Totals									
		0-11	12-23	24-35	36-47	48-60	61+			In Intact Family Services	Children of Teen Wards	In Foster Care	LEA EI	LEA (ECSE)	EHS	PI (center-based)	Child Care Program	HV	Other Services	Multiple Services	Rescreening	LEA (ECSE)	PFA	HS	Child Care Program	Other HV	Multiple Services	Rescreening	Ages 0-35 mos.	Ages 36-61+ mos.					
NONE	393	341	29	19	2	2	0	0	0	0	0	0	0	0	0	0	0	0	0	0	0	0	0	0	0	0	0	0	0	0	0	0	0	389	4
TOTAL	1485	835	208	117	193	125	0	877	215	0	0	2	8	4	0	0	1	0	0	0	1	27	87	134	6	13	0	11	13	3	1160	318			

CFC #04 Child & Family Connections, DayOne PACT, 1551 E Fabyan Pkwy, Geneva, IL 60134 - Ellana Mavromatis

60109	19	0	0	2	8	9	0	14	5	0	0	0	0	0	0	0	0	0	0	0	0	0	0	0	0	0	0	0	0	0	0	0	2	17
60110	141	0	3	8	62	68	0	12	129	0	0	0	1	0	0	0	0	0	0	0	0	1	11	116	0	0	0	1	0	0	0	11	130	
60119	7	0	0	2	2	3	0	4	3	0	0	0	0	1	0	0	0	0	0	0	1	0	1	0	0	0	1	0	0	0	2	5		
60120	86	6	8	3	29	40	0	19	67	0	0	0	1	0	0	0	0	0	0	0	0	0	43	0	0	0	23	0	0	0	17	69		
60123	21	2	1	3	8	7	0	5	16	0	0	0	3	0	0	0	0	0	0	0	0	0	13	0	0	0	0	0	0	0	6	15		
60134	10	0	0	1	5	4	0	5	5	0	0	0	1	0	0	0	0	0	0	0	0	4	0	0	0	0	0	0	0	2	1	9		
60174	16	0	0	0	6	10	0	6	10	0	0	0	0	0	0	0	0	0	0	0	0	5	1	0	0	0	0	0	0	3	0	16		
60505	164	22	39	24	52	27	0	149	15	0	0	0	3	0	0	0	0	0	0	0	11	0	0	0	0	0	0	0	0	0	85	79		
60506	31	2	11	9	9	0	0	26	5	0	0	0	1	0	0	0	0	0	0	0	0	1	0	0	0	0	0	0	0	0	22	9		
60510	29	0	0	8	13	8	0	5	24	0	0	0	1	1	0	0	0	0	0	0	3	6	0	0	0	0	9	0	0	8	21			
60543	84	7	18	15	16	18	10	83	1	0	0	0	1	0	0	0	0	0	0	0	0	0	0	0	0	0	0	0	0	40	44			
60545	43	0	0	0	27	16	0	17	26	0	0	0	0	0	0	0	0	0	0	0	0	4	14	0	0	0	0	0	0	8	0	43		
60560	35	0	0	0	18	17	0	9	26	0	0	0	0	0	0	0	0	0	0	0	0	0	20	0	0	0	0	0	0	12	0	35		
NONE	892	860	16	15	1	0	0	1	0	0	0	0	0	0	0	0	0	0	0	0	0	0	0	0	0	0	0	0	0	0	891	1		
TOTAL	1578	899	96	90	256	227	10	355	332	0	0	0	12	2	0	0	0	0	0	0	16	36	208	0	0	0	34	0	25	1085	493			

CFC #05 Child & Family Connections, DayOne PACT, 750 Warrenville Rd, Ste 300, Lisle, IL 60532 - Marianne McGuire

60101	67	2	7	9	33	16	0	23	44	0	0	0	1	0	0	0	0	0	1	0	7	4	31	0	0	0	5	5	0	18	49
60103	28	0	0	0	13	15	0	2	26	0	0	0	0	0	0	0	0	0	0	0	0	0	23	0	0	0	2	1	2	0	28
60108	20	0	0	2	7	10	1	11	9	0	0	0	0	0	0	0	0	0	0	0	1	3	2	0	0	0	0	0	3	2	18
60133	18	0	0	0	14	4	0	7	11	0	0	1	0	0	0	0	0	0	0	0	0	0	10	0	0	0	1	0	0	0	18
60137	77	10	8	16	24	19	0	10	67	2	0	0	4	4	0	0	1	1	1	3	24	7	20	0	0	0	6	0	2	34	43
60139	4	2	2	0	0	0	0	0	4	0	0	0	1	0	0	0	0	0	0	0	3	0	0	0	0	0	0	0	0	4	0
60148	42	3	2	7	22	7	1	9	33	0	0	0	0	1	0	0	0	0	0	3	8	8	10	0	0	0	0	0	3	12	30
60157	15	0	0	0	10	5	0	0	15	0	0	0	0	0	0	0	0	0	0	0	0	4	9	2	0	0	0	0	0	0	15
60181	26	4	9	5	7	1	0	13	13	0	0	0	6	3	0	0	0	0	0	0	0	4	0	0	0	0	0	0	0	18	8
60185	141	23	38	41	13	26	0	94	47	0	0	0	4	4	0	0	0	0	0	0	0	0	38	1	0	0	0	0	0	102	39
60188	31	1	1	3	15	11	0	11	20	0	0	0	0	0	0	0	0	0	0	0	4	4	8	0	0	0	0	0	4	5	26

Screenings Reported by CFC/CPS/DCFS and ZIP / FY2019 Q1

Zip Code	Total Screened	Ages (in Months)							Not Referred	Total Referred	Screenings of Children involved with DCFS			# of Children Ages 0 to 3 Referred to								# of Children Ages 3 to 5 Referred to					Sub-Totals				
		0-11	12-23	24-35	36-47	48-60	61+	In Intact Family Services			Children of Teen Wards	In Foster Care	EI	LEA (ECSE)	EHS	PI (center-based)	Child Care Program	HV	Other Services	Multiple Services	Rescreening	LEA (ECSE)	PFA	HS	Child Care Program	HV	Other Services	Multiple Services	Rescreening	Ages 0-35 mos.	Ages 36-61+ mos.
60191	34	0	0	3	18	11	2	0	33	0	0	0	0	2	0	0	0	0	0	0	0	0	31	0	0	0	0	0	0	3	31
60439	6	0	0	0	4	2	0	3	3	0	0	0	0	0	0	0	0	0	0	0	0	3	0	0	0	0	0	0	0	6	
60504	154	2	8	18	55	71	0	89	65	0	0	0	2	1	0	0	0	0	1	0	2	12	32	0	0	1	0	14	28	126	
60527	21	0	0	1	12	7	0	0	21	0	0	1	0	0	0	0	0	0	0	1	0	0	12	0	0	8	1	0	1	19	
60532	13	0	0	1	9	3	0	3	10	0	0	0	0	1	0	0	0	0	0	0	9	0	0	0	0	0	0	0	1	12	
60559	6	0	0	0	3	3	0	3	3	0	0	0	0	0	0	0	0	0	0	0	3	0	0	0	0	0	0	0	0	6	
60561	17	0	0	0	7	10	0	6	11	0	0	0	0	0	0	0	0	0	0	0	4	7	0	0	0	0	0	0	0	17	
NONE	622	574	28	18	2	0	0	0	0	0	0	0	0	0	0	0	0	0	0	0	0	0	0	0	0	0	0	0	620	2	
TOTAL	1342	621	103	124	268	221	4	284	435	2	0	2	18	16	0	0	1	1	6	3	50	65	221	15	0	0	23	7	28	848	493

CFC #06 Child & Family Connections, Clearbrook, 1835 W Central Rd, Arlington Heights, IL 60005 - Jason Tietz

60005	26	0	0	12	8	6	0	2	24	0	0	0	0	10	0	0	0	0	0	0	14	0	0	0	0	0	0	0	12	14	
60010	60	0	0	0	28	32	0	36	24	0	0	0	0	0	0	0	0	0	0	0	0	0	0	0	0	3	5	10	0	60	
60025	6	0	0	0	4	2	0	0	0	0	0	0	0	0	0	0	0	0	0	0	0	0	0	0	0	0	0	0	0	6	
60026	28	0	0	0	15	13	0	7	21	0	0	0	0	0	0	0	0	0	0	0	2	0	0	19	0	0	0	0	0	28	
60053	62	0	0	3	41	18	0	8	54	0	0	0	0	1	0	0	0	0	1	1	0	7	43	0	0	0	0	1	0	3	59
60056	56	0	0	2	34	20	0	13	43	0	0	0	0	2	0	0	0	0	0	0	17	20	0	0	0	3	6	1	2	54	
60076	14	0	0	0	10	4	0	4	10	0	0	0	0	0	0	0	0	0	0	0	3	0	0	0	0	7	0	0	0	14	
60201	5	0	0	0	2	3	0	4	1	0	0	0	0	0	0	0	0	0	0	0	0	0	0	0	0	0	1	0	0	5	
60714	50	1	3	13	20	9	4	29	21	0	0	0	4	1	0	0	0	0	0	0	8	0	0	0	0	0	0	7	17	33	
TOTAL	307	1	3	30	162	107	4	103	198	0	0	0	4	14	0	0	0	0	1	1	1	51	63	0	19	0	13	13	18	34	273

CFC #07 Child & Family Connections, Suburban Access, Inc, One Westbrook Corporate Ctr, Ste 640, Westchester, IL 60154 - JoAnn Alferink

60164	21	0	0	4	3	14	0	0	21	0	0	0	4	0	0	0	0	0	0	0	0	17	0	0	0	0	0	0	4	17
60171	10	0	0	2	5	3	0	0	10	0	0	0	0	2	0	0	0	0	0	0	4	3	0	0	0	1	0	0	2	8
60302	48	0	0	0	15	31	2	2	46	0	0	0	0	0	0	0	0	0	0	0	1	43	0	0	0	2	0	0	0	48
60546	5	0	0	0	3	2	0	0	4	0	0	0	0	0	0	0	0	0	0	0	4	0	0	0	0	0	0	1	0	5
60608	39	34	5	0	0	0	0	0	0	0	0	0	0	0	0	0	0	0	0	0	0	0	0	0	0	0	0	0	39	0
60612	25	20	5	0	0	0	0	0	0	0	0	0	0	0	0	0	0	0	0	0	0	0	0	0	0	0	0	0	25	0
60623	172	158	13	1	0	0	0	0	0	0	0	0	0	0	0	0	0	0	0	0	0	0	0	0	0	0	0	0	172	0
60624	51	46	5	0	0	0	0	0	0	0	0	0	0	0	0	0	0	0	0	0	0	0	0	0	0	0	0	0	51	0
60706	4	0	0	3	0	1	0	0	4	0	0	0	0	3	0	0	0	0	0	0	0	1	0	0	0	0	0	0	3	1

Screenings Reported by CFC/CPS/DCFS and ZIP / FY2019 Q1

Zip Code	Total Screened	Ages (in Months)						Not Referred	Total Referred	Screenings of Children involved with DCFS			# of Children Ages 0 to 3 Referred to								# of Children Ages 3 to 5 Referred to					Sub-Totals			
		0-11	12-23	24-35	36-47	48-60	61+			In Intact Family Services	Children of Teen Wards	In Foster Care	LEA EI	LEA (ECSE)	PI (center-based)	Child Care Program	HV	Other Services	Multiple Services	Rescreening	LEA (ECSE)	PFA	HS	Child Care Program	HV	Other Services	Multiple Services	Rescreening	Ages 0-35 mos.
60804	205	92	0	0	44	69	0	25	88	0	0	0	0	0	0	0	0	0	0	29	59	0	0	0	0	0	0	92	113
TOTAL	580	350	28	10	70	120	2	27	173	0	0	0	4	5	0	0	0	0	0	38	123	0	0	0	3	0	1	388	192

CFC #08 Child & Family Connections, Easter Seals of Metropolitan Chicago, 9455 S Hoyne Ave, Chicago, IL 60643 - Marlene Stroube

60805	0	0	0	0	0	0	0	0	0	0	0	0	0	0	0	0	0	0	0	0	0	0	0	0	0	0	0	0	0
TOTAL	0	0	0	0	0	0	0	0	0	0	0	0	0	0	0	0	0	0	0	0	0	0	0	0	0	0	0	0	0

CFC #09 Child & Family Connections, Hektoen Institute for Medical Research, LLC, 5422 W Roosevelt Rd, Chicago, IL 60644 - Grace Ortiz

60644	83	71	11	1	0	0	0	0	0	0	0	0	0	0	0	0	0	0	0	0	0	0	0	0	0	0	0	83	0
TOTAL	83	71	11	1	0	0	0	0	0	0	0	0	0	0	0	0	0	0	0	0	0	0	0	0	0	0	0	83	0

CFC #13 Child & Family Connections, Regional Office of Education #26, 130 S Lafayette St, Ste 200, Macomb, IL 61455 - Chuck Farr

61415	1	1	0	0	0	0	0	1	0	0	0	0	0	0	0	0	0	0	0	0	0	0	0	0	0	0	0	1	0
61422	23	3	0	0	13	7	0	3	20	0	0	0	0	0	0	0	0	0	3	17	0	0	0	0	0	0	3	20	
61431	2	0	1	0	1	0	0	1	1	0	0	1	0	0	0	0	0	0	0	1	0	0	0	0	0	0	1	1	
61440	3	2	1	0	0	0	0	3	0	0	0	1	0	0	0	0	0	0	0	0	0	0	0	0	0	0	3	0	
61455	17	5	5	7	0	0	0	15	2	0	0	1	2	0	0	0	0	0	0	0	0	0	0	0	0	0	17	0	
61482	1	1	0	0	0	0	0	1	0	0	0	0	0	0	0	0	0	0	0	0	0	0	0	0	0	0	1	0	
61520	3	2	0	1	0	0	0	3	0	0	0	0	0	0	0	0	0	0	0	0	0	0	0	0	0	0	3	0	
61542	2	2	0	0	0	0	0	2	0	0	0	0	0	0	0	0	0	0	0	0	0	0	0	0	0	0	2	0	
61563	2	0	2	0	0	0	0	2	0	0	0	0	0	0	0	0	0	0	0	0	0	0	0	0	0	0	2	0	
62326	3	1	0	2	0	0	0	2	1	0	0	0	0	0	0	0	0	0	0	1	0	0	0	0	0	0	3	0	
62358	4	1	0	2	1	0	0	4	0	0	0	0	0	0	0	0	0	0	0	0	0	0	0	0	0	0	3	1	
62681	23	0	0	4	16	3	0	1	22	2	0	0	2	0	0	0	0	1	0	0	0	0	0	0	0	0	4	19	
NONE	490	430	35	17	6	2	0	0	0	0	0	0	0	0	0	0	0	0	0	0	0	0	0	0	0	0	482	8	
TOTAL	574	448	44	33	37	12	0	38	46	2	0	3	4	0	0	0	1	0	0	3	38	0	0	0	0	0	525	49	

CFC #14 Child & Family Connections, 3000 W Rohmann Ave., West Peoria, IL 61604 - Michelle Harr

61234	11	0	0	0	7	4	0	4	7	0	0	0	0	0	0	0	0	0	0	0	0	0	0	1	0	6	0	11
61238	9	0	0	0	6	3	0	8	1	0	0	0	0	0	0	0	0	0	0	0	0	0	0	1	0	0	0	9
61421	17	0	0	0	8	9	0	12	5	0	0	0	0	0	0	0	0	0	0	0	0	0	0	0	0	5	0	17

Screenings Reported by CFC/CPS/DCFS and ZIP / FY2019 Q1

Zip Code	Total Screened	Ages (in Months)							Not Referred	Total Referred	Screenings of Children involved with DCFS			# of Children Ages 0 to 3 Referred to								# of Children Ages 3 to 5 Referred to					Sub-Totals				
		0-11	12-23	24-35	36-47	48-60	61+	In Intact Family Services			Children of Teen Wards	In Foster Care	LEA EI	LEA (ECSE)	EHS	PI (center-based)	Child Care Program	HV	Other Services	Multiple Services	Rescreening	LEA (ECSE)	PFA	HS	Child Care Program	HV	Other Services	Multiple Services	Rescreening	Ages 0-35 mos.	Ages 36-61+ mos.
		61443	95	0	0	0	61	22			12	69	26	0	0	0	0	0	0	0	0	0	0	0	0	0	0	0	0	12	3
61491	9	0	0	0	5	4	0	6	3	0	0	1	0	0	0	0	0	0	0	0	3	0	0	0	0	0	0	0	0	0	9
61548	24	0	0	3	11	10	0	1	23	0	0	0	0	1	0	0	0	0	0	2	0	0	0	0	5	0	1	3	21		
61550	25	0	2	2	15	4	2	12	13	0	0	0	1	0	0	0	0	0	0	0	2	0	0	0	0	11	1	3	4	21	
61554	40	0	0	0	34	6	0	0	40	0	0	2	0	0	0	0	0	0	0	0	40	0	0	0	11	11	0	0	40		
61564	9	0	0	0	5	3	1	8	1	7	0	0	0	0	0	0	0	0	0	1	0	0	0	0	0	0	0	0	0	9	
61568	5	0	0	0	3	2	0	3	2	0	0	0	0	0	0	0	0	0	0	0	0	0	0	0	0	0	0	2	0	5	
61603	52	8	16	12	10	6	0	36	16	0	0	0	2	1	0	0	0	0	0	0	0	0	0	0	0	0	0	0	36	16	
61604	4	1	1	2	0	0	0	0	4	2	0	2	0	0	0	0	0	0	0	0	0	0	0	0	0	0	0	0	4	0	
61605	156	0	0	19	80	56	1	3	153	7	0	13	0	0	0	7	0	0	1	0	3	12	108	0	0	11	0	14	19	137	
61607	50	0	4	6	21	19	0	26	24	0	0	0	2	0	0	0	0	0	1	0	2	0	0	0	0	5	14	7	10	40	
61616	109	2	3	5	56	43	0	7	102	0	0	0	3	0	0	0	0	0	0	0	99	0	0	0	0	0	0	0	10	99	
61734	9	0	0	0	0	9	0	0	9	0	0	0	0	0	0	0	0	0	0	5	0	0	2	0	2	0	0	0	0	9	
61738	25	0	0	0	15	10	0	7	18	0	0	0	0	0	0	0	0	0	0	4	12	0	0	0	1	0	1	0	25		
61755	9	0	0	2	4	3	0	3	6	0	0	0	0	1	0	0	0	0	1	0	0	3	0	0	0	1	0	0	2	7	
NONE	388	300	52	28	6	2	0	0	0	0	0	0	0	0	0	0	0	0	0	0	0	0	0	0	0	0	0	0	380	8	
TOTAL	1046	311	78	79	347	215	16	205	453	16	0	18	8	3	0	7	0	0	5	0	18	29	279	0	2	0	61	29	50	468	578

CFC #15 Child & Family Connections, Services of Will, Grundy, & Kankakee Counties, Inc., 2300 Glenwood Ave, Joliet, IL 60435 - Rachel Cimino

60404	39	3	2	0	16	18	0	13	26	0	0	0	0	0	0	0	0	0	0	0	2	22	0	0	0	2	0	0	5	34
60408	17	0	0	2	10	5	0	0	17	0	0	0	0	0	0	0	0	0	0	0	3	12	0	0	0	0	0	2	2	15
60410	45	2	0	8	26	9	0	3	42	0	0	1	0	2	0	0	0	0	0	0	6	34	0	0	0	0	0	0	10	35
60417	83	0	5	6	40	31	1	6	77	0	0	0	5	0	0	0	0	0	0	0	25	47	0	0	0	0	0	0	11	72
60423	5	0	0	0	5	0	0	2	3	0	0	0	0	0	0	0	0	0	0	0	0	3	0	0	0	0	0	0	0	5
60432	171	19	10	12	54	72	4	131	40	0	0	0	2	10	0	0	0	0	0	0	28	0	0	0	0	0	0	0	41	130
60433	121	72	26	5	8	10	0	12	109	0	0	17	17	0	0	0	0	0	0	0	0	14	1	0	0	0	2	1	103	18
60435	78	19	24	30	2	3	0	58	20	0	0	1	18	0	0	0	0	0	0	0	2	0	0	0	0	0	0	0	73	5
60436	113	0	0	5	57	51	0	71	42	0	0	0	0	0	0	0	0	0	0	0	6	35	0	0	0	0	0	1	5	108
60442	44	0	0	0	23	21	0	1	43	0	0	0	0	0	0	0	0	0	0	0	3	40	0	0	0	0	0	0	0	44
60444	35	2	0	0	21	12	0	5	30	0	0	1	0	0	0	0	0	0	0	0	11	19	0	0	0	0	0	0	2	33
60446	270	1	2	0	129	137	1	140	130	0	0	0	0	0	0	0	0	0	0	0	34	27	0	0	0	0	0	69	3	267
60447	3	0	0	0	1	2	0	0	3	0	0	0	0	0	0	0	0	0	0	0	2	1	0	0	0	0	0	0	0	3
60450	79	8	7	9	39	16	0	21	58	0	0	0	3	0	0	0	0	0	0	0	20	30	0	0	0	0	0	5	24	55

Screenings Reported by CFC/CPS/DCFS and ZIP / FY2019 Q1

Zip Code	Total Screened	Ages (in Months)						Not Referred	Total Referred	Screenings of Children involved with DCFS			# of Children Ages 0 to 3 Referred to								# of Children Ages 3 to 5 Referred to					Sub-Totals					
		0-11	12-23	24-35	36-47	48-60	61+			In Intact Family Services	Children of Teen Wards	In Foster Care	EI	LEA (ECSE)	EHS	PI (center-based)	Child Care Program	HV	Other Services	Multiple Services	Rescreening	LEA (ECSE)	PFA	HS	Child Care Program	Other HV Services	Multiple Services	Rescreening	Ages 0-35 mos.	Ages 36-61+ mos.	
60451	50	0	0	0	28	22	0	0	50	0	0	0	0	0	0	0	0	0	0	0	16	10	0	21	0	0	0	3	0	50	
60481	40	4	0	4	16	16	0	5	35	0	0	0	0	0	0	0	0	0	0	12	23	0	0	0	0	0	0	8	32		
60504	21	0	0	1	10	10	0	12	9	0	0	0	0	0	0	0	0	0	0	5	1	0	0	0	0	0	3	1	20		
60518	12	0	0	0	6	6	0	11	1	0	0	0	0	0	0	0	0	0	0	0	0	0	0	0	1	0	0	0	12		
60544	156	0	0	41	76	39	0	30	126	0	0	0	0	0	0	0	0	0	0	60	66	0	0	0	0	0	0	41	115		
60545	1	1	0	0	0	0	0	1	0	0	0	0	0	0	0	0	0	0	0	0	0	0	0	0	0	0	0	1	0		
60901	14	3	6	5	0	0	0	10	4	0	0	0	4	0	0	0	0	0	0	0	0	0	0	0	0	0	0	14	0		
60915	59	4	4	6	18	27	0	3	56	0	0	0	8	0	0	0	0	0	0	0	47	0	1	0	0	0	0	14	45		
60954	33	1	2	1	15	14	0	0	33	0	0	0	0	0	0	0	4	0	0	0	26	0	0	0	0	0	3	4	29		
60964	15	1	1	1	9	3	0	15	0	0	0	0	0	0	0	0	0	0	0	0	0	0	0	0	0	0	0	3	12		
61301	26	0	0	1	12	13	0	21	5	0	0	0	0	0	0	0	0	0	0	2	0	0	0	0	0	0	3	1	25		
61325	20	0	1	1	11	7	0	4	16	0	0	0	2	0	0	0	0	0	0	4	8	0	0	0	1	0	1	2	18		
61341	24	0	0	1	15	8	0	1	23	0	0	0	0	0	0	0	0	0	0	2	17	0	0	0	1	0	3	1	23		
61342	59	0	0	4	27	28	0	16	43	0	0	0	0	0	0	0	0	0	0	3	29	4	0	0	5	0	2	4	55		
61348	26	0	0	0	23	3	0	0	26	0	0	0	0	0	0	0	0	0	0	2	19	0	0	0	1	0	4	0	26		
61350	62	2	0	0	37	23	0	39	23	0	0	0	0	0	0	0	0	0	0	3	16	0	0	0	2	0	2	2	60		
61354	98	0	0	1	51	45	1	27	71	0	0	0	0	0	0	0	0	1	7	55	0	0	0	6	0	2	1	97			
61360	36	0	0	1	13	20	2	14	22	0	0	0	0	0	0	0	0	1	3	15	0	0	0	2	0	1	1	35			
61364	139	1	1	3	69	65	0	66	73	0	0	0	1	0	0	0	0	1	10	43	0	0	0	5	0	13	5	134			
61370	15	0	0	1	8	6	0	0	15	0	0	0	0	0	0	0	1	0	13	0	0	0	0	0	0	1	1	14			
61373	8	0	0	2	3	3	0	0	8	0	0	0	0	0	0	0	2	0	0	6	0	0	0	0	0	0	0	2	6		
NONE	534	410	71	32	13	8	0	0	0	0	0	0	0	0	0	0	0	0	0	0	0	0	0	0	0	0	0	513	21		
TOTAL	2551	553	162	183	891	753	9	738	1279	0	0	20	60	12	0	0	0	4	4	0	79	284	665	5	22	0	26	2	119	898	1653

CFC #16 Child & Family Connections, 201 W Springfield Ave, Ste 508 & 509, , Champaign, IL 61820 - Chris Johnson

NONE	560	481	56	14	6	3	0	0	0	0	0	0	0	0	0	0	0	0	0	0	0	0	0	0	0	0	0	0	0	551	9
TOTAL	560	481	56	14	6	3	0	0	0	0	0	0	0	0	0	0	0	0	0	0	0	0	0	0	0	0	0	0	551	9	

CFC #17 Child & Family Connections, ROE of Adams/Pike Counties, 510 Maine St, Ste 615, Quincy, IL 62301 - Michelle Schwanke

62016	17	0	0	4	7	6	0	13	4	0	0	0	0	0	0	0	0	0	1	0	0	0	0	0	0	0	3	4	13
62044	9	0	0	2	7	0	0	6	3	1	0	0	0	0	0	0	0	1	0	0	0	0	0	0	0	0	2	2	7
62047	39	0	0	0	14	25	0	38	1	0	0	0	0	0	0	0	0	0	0	0	0	0	0	0	0	0	1	0	39

Screenings Reported by CFC/CPS/DCFS and ZIP / FY2019 Q1

Zip Code	Total Screened	Ages (in Months)						Not Referred	Total Referred	Screenings of Children involved with DCFS			# of Children Ages 0 to 3 Referred to							# of Children Ages 3 to 5 Referred to						Sub-Totals					
		0-11	12-23	24-35	36-47	48-60	61+			In Intact Family Services	Children of Teen Wards	In Foster Care	LEA EI	LEA (ECSE)	EHS	PI (center-based)	Child Care Program	HV	Other Services	Multiple Services	Rescreening	LEA (ECSE)	PFA	HS	Child Care Program	Other HV Services	Multiple Services	Rescreening	Ages 0-35 mos.	Ages 36-61+ mos.	
62082	6	0	0	0	2	4	0	5	1	0	0	0	0	0	0	0	0	0	0	1	0	0	0	0	0	0	0	0	0	0	6
62092	45	0	0	1	24	18	2	28	17	1	0	0	0	0	0	0	0	0	0	0	0	0	0	0	0	0	17	1	44		
62340	13	0	0	1	6	6	0	13	0	2	0	0	0	0	0	0	0	0	0	0	0	0	0	0	0	0	0	1	12		
62345	47	7	7	16	10	6	0	39	8	0	0	0	3	0	0	0	3	0	3	2	1	0	0	0	0	0	0	3	30	16	
62353	9	0	0	1	6	2	0	6	3	0	0	0	0	0	0	0	0	0	1	0	0	0	0	0	0	0	2	1	8		
62363	44	0	0	1	23	20	0	37	7	0	0	0	0	0	0	0	0	0	0	0	0	0	0	0	0	0	7	1	43		
62366	8	0	0	3	4	1	0	5	3	0	0	0	0	0	0	0	0	0	0	0	0	0	0	0	0	0	3	3	5		
62618	78	0	0	0	52	26	0	55	23	2	0	0	0	0	0	0	0	0	0	1	0	0	0	0	0	0	22	0	78		
62631	7	0	0	3	3	1	0	6	1	0	0	0	0	0	0	0	0	0	0	0	0	0	0	0	0	0	1	3	4		
62638	1	0	0	0	0	1	0	1	0	0	0	0	0	0	0	0	0	0	0	0	0	0	0	0	0	0	0	0	1		
62650	58	0	0	4	23	26	5	45	13	0	0	0	0	0	0	0	0	1	2	0	0	0	0	0	0	10	4	54			
62692	9	0	0	1	4	4	0	7	2	0	0	0	0	0	0	0	0	0	0	0	0	0	0	0	0	2	1	8			
62694	15	0	0	3	6	5	1	9	6	1	0	0	0	0	0	0	0	0	1	0	0	0	0	0	0	5	3	12			
NONE	314	255	32	16	6	5	0	0	0	0	0	0	0	0	0	0	0	0	0	0	0	0	0	0	0	0	303	11			
TOTAL	719	262	39	56	197	156	8	313	92	7	0	0	3	0	0	0	3	0	3	5	7	0	0	0	0	0	0	0	78	357	361

CFC #18 Child & Family Connections, Sangamon Co. Public Health Department, 2833 S Grand Ave, E, Springfield, IL 62703 - Lisa McGlothlin

62642	39	8	21	10	0	0	0	0	39	0	0	0	6	0	0	0	0	39	0	3	1	0	0	0	0	0	0	0	0	39	0
62644	20	0	0	0	11	9	0	0	20	0	0	1	0	0	0	0	0	0	0	0	20	0	0	0	0	0	12	12	0	20	
62664	35	0	0	7	19	9	0	31	3	0	0	1	0	0	0	0	0	0	0	3	0	0	0	0	0	0	3	7	28		
62684	25	0	0	0	13	12	0	0	25	3	0	1	0	0	0	0	0	0	0	0	11	0	14	0	0	0	0	0	0	25	
NONE	376	327	30	18	1	0	0	0	0	0	0	0	0	0	0	0	0	0	0	0	0	0	0	0	0	0	0	375	1		
TOTAL	495	335	51	35	44	30	0	31	87	3	0	3	6	0	0	0	39	0	3	1	3	31	0	14	0	0	12	15	421	74	

CFC #19 Child & Family Connections, Macon Co. Community Mental Health Board, 132 S Water St, Ste 604, Decatur, IL 62523 - Debbie Floyd

61910	12	0	0	1	5	6	0	0	12	0	0	0	0	0	0	0	0	0	0	1	11	0	0	0	1	1	0	1	11
61911	2	0	0	0	2	0	0	0	2	0	0	0	0	0	0	0	0	0	0	0	2	0	0	0	0	0	0	0	2
61913	4	0	0	0	3	1	0	0	4	0	0	0	0	0	0	0	0	0	0	4	4	0	0	0	0	4	0	0	4
61914	5	0	0	0	4	1	0	0	5	0	0	0	0	0	0	0	0	0	0	0	5	0	0	0	1	1	0	0	5
61920	31	0	0	4	5	22	0	0	31	0	0	0	1	0	0	0	0	0	0	2	28	0	0	0	0	0	0	4	27
61924	7	0	0	2	5	0	0	0	7	0	0	0	0	0	0	0	0	0	0	2	4	1	0	0	2	2	0	2	5
61933	1	0	0	0	0	0	0	0	1	0	0	0	0	0	0	0	0	0	0	1	0	0	0	0	0	0	0	0	0

Screenings Reported by CFC/CPS/DCFS and ZIP / FY2019 Q1

Zip Code	Total Screened	Ages (in Months)						Not Referred	Total Referred	Screenings of Children involved with DCFS			# of Children Ages 0 to 3 Referred to								# of Children Ages 3 to 5 Referred to					Sub-Totals					
		0-11	12-23	24-35	36-47	48-60	61+			In Intact Family Services	Children of Teen Wards	In Foster Care	LEA EI	LEA (ECSE)	EHS	PI (center-based)	Child Care Program	HV	Other Services	Multiple Services	Rescreening	LEA (ECSE)	PFA	HS	Child Care Program	Other HV Services	Multiple Services	Rescreening	Ages 0-35 mos.	Ages 36-61+ mos.	
61937	4	0	0	1	1	2	0	0	4	0	0	0	0	0	0	0	0	0	0	0	4	4	0	0	0	0	0	1	3		
61938	24	0	0	5	13	6	0	0	24	0	0	0	0	0	0	0	0	0	0	0	5	18	1	0	0	2	2	0	5	19	
61943	2	0	0	1	0	1	0	0	2	0	0	0	0	0	0	0	0	0	0	0	1	1	0	0	0	0	0	1	1		
61944	15	0	0	3	7	5	0	0	15	0	0	0	0	0	0	0	0	0	0	0	5	10	0	0	0	0	0	3	12		
61951	23	0	0	3	10	10	0	0	23	0	0	0	0	0	0	0	0	0	0	0	1	22	0	0	0	1	1	0	3	20	
61953	2	0	0	2	0	0	0	0	2	0	0	0	0	0	0	0	0	0	0	0	0	0	0	0	0	0	0	2	0		
61956	6	0	0	1	1	4	0	0	6	0	0	0	0	0	0	0	0	0	0	0	0	6	0	0	0	1	1	0	1	5	
61957	7	0	0	3	3	1	0	0	7	0	0	0	0	0	0	0	0	0	0	0	4	3	0	0	0	0	0	3	4		
62420	12	0	0	1	5	6	0	0	12	0	0	0	0	0	0	0	0	0	0	0	1	11	0	0	0	0	0	1	11		
62422	10	0	0	3	4	3	0	0	10	0	0	0	0	0	0	0	0	2	0	0	1	6	1	0	0	1	1	0	3	7	
62441	19	0	0	5	7	7	0	0	19	0	0	0	0	0	0	0	0	0	0	0	2	17	0	0	0	1	1	0	5	14	
62447	7	0	0	3	1	3	0	0	7	0	0	0	0	0	0	0	0	0	0	0	1	6	0	0	0	3	3	0	3	4	
62463	4	0	0	0	4	0	0	0	4	0	0	0	0	0	0	0	0	0	0	0	1	3	0	0	0	0	0	0	0	4	
62468	8	0	0	1	4	3	0	0	8	0	0	0	0	0	0	0	0	0	0	0	1	7	0	0	0	0	0	0	1	7	
62522	52	13	22	17	0	0	0	48	4	0	0	2	4	0	0	0	0	0	0	0	0	0	0	0	0	0	0	0	52	0	
62565	6	0	0	3	2	1	0	0	6	0	0	0	0	0	0	0	0	3	0	0	0	3	0	0	0	0	0	0	3	3	
NONE	523	416	79	16	5	7	0	0	0	0	0	0	0	0	0	0	0	0	0	0	0	0	0	0	0	0	0	511	12		
TOTAL	786	429	101	75	91	89	0	48	215	0	0	2	5	2	0	0	0	0	0	5	0	0	0	0	0	0	0	0	0	605	180

CFC #20 Child & Family Connections, Community Support Systems, 1901 S 4th St, Ste 209, Effingham, IL 62401 - Rita Wahl

62401	1	0	0	0	0	0	0	0	1	0	0	0	0	0	0	0	0	0	0	0	0	0	0	0	0	1	0	0	0	0
62411	7	0	0	3	2	2	0	0	7	0	0	0	0	1	0	0	0	0	0	0	2	0	0	0	0	4	1	0	3	4
62414	11	0	0	2	7	2	0	0	11	0	0	0	0	0	0	0	0	2	0	0	1	8	0	0	0	0	0	2	9	
62424	4	0	0	1	1	2	0	0	4	0	0	0	0	0	0	0	0	0	0	0	4	0	0	0	1	1	0	1	3	
62439	2	0	0	2	0	0	0	0	2	2	0	0	0	2	0	0	0	0	0	0	0	0	0	0	0	0	0	0	2	0
62674	6	0	0	1	4	1	0	2	4	0	0	0	0	0	0	0	0	0	0	0	3	0	0	0	0	0	0	1	1	5
62839	27	0	0	0	20	7	0	0	27	0	0	1	0	0	0	0	0	0	0	0	2	25	0	0	0	0	0	0	0	27
NONE	381	317	43	14	3	4	0	0	0	0	0	0	0	0	0	0	0	0	0	0	0	0	0	0	0	0	0	374	7	
TOTAL	439	317	43	23	37	18	0	2	56	2	0	1	0	3	0	0	0	0	0	2	0	0	0	0	6	2	1	383	55	

CFC #21 Child & Family Connections, Regional Office of Education #13, 4 Eagle Center, Ste 4, O'Fallon, IL 62269 - Terri Kampwerth

62010	33	0	1	3	21	8	0	0	33	0	0	0	1	0	0	0	0	0	0	0	4	28	0	0	0	0	0	0	4	29
-------	----	---	---	---	----	---	---	---	----	---	---	---	---	---	---	---	---	---	---	---	---	----	---	---	---	---	---	---	---	----

Screenings Reported by CFC/CPS/DCFS and ZIP / FY2019 Q1

Zip Code	Total Screened	Ages (in Months)						Not Referred	Total Referred	Screenings of Children involved with DCFS			# of Children Ages 0 to 3 Referred to								# of Children Ages 3 to 5 Referred to					Sub-Totals					
		0-11	12-23	24-35	36-47	48-60	61+			In Intact Family Services	Children of Teen Wards	In Foster Care	LEA EI	LEA (ECSE)	EHS	PI (center-based)	Child Care Program	HV	Other Services	Multiple Services	Rescreening	LEA (ECSE)	PFA	HS	Child Care Program	Other HV Services	Multiple Services	Rescreening	Ages 0-35 mos.	Ages 36-61+ mos.	
62024	74	16	16	42	0	0	0	74	0	0	0	0	0	0	0	0	0	0	0	0	0	0	0	0	0	0	0	0	74	0	
62025	14	0	0	3	5	6	0	1	13	0	0	0	0	0	0	0	0	0	0	0	13	0	0	0	0	0	0	3	11		
62040	332	75	111	51	58	37	0	328	4	0	0	0	4	0	0	0	0	0	0	0	0	0	0	0	0	0	0	237	95		
62048	25	0	0	2	11	12	0	0	25	0	0	2	0	0	0	0	0	1	0	0	1	25	0	0	0	4	0	2	23		
62206	11	0	1	5	1	3	0	0	11	0	0	0	0	1	0	0	0	0	4	4	1	0	5	0	0	5	5	0	6	4	
62220	16	3	7	6	0	0	0	12	4	0	0	0	4	0	0	0	0	0	0	0	0	0	0	0	0	0	0	16	0		
62221	10	4	3	3	0	0	0	8	2	1	3	0	2	0	0	0	0	0	0	0	0	0	0	0	0	0	0	10	0		
62223	106	3	3	5	59	36	0	55	45	0	0	0	0	0	0	0	0	0	0	0	6	27	0	1	0	25	31	0	11	95	
62234	31	0	0	0	12	18	1	2	29	0	0	0	0	0	0	0	0	0	0	0	1	26	0	0	0	2	0	0	0	31	
62257	10	0	0	4	4	2	0	0	10	0	0	0	0	0	0	0	0	0	0	0	10	0	0	0	0	0	0	4	6		
62260	10	4	4	1	1	0	0	9	1	0	0	0	1	0	0	0	0	0	0	0	0	0	0	0	0	0	0	9	1		
62286	24	0	0	0	16	8	0	0	24	0	0	0	0	0	0	0	0	0	0	0	24	0	0	0	2	2	0	0	24		
62288	4	0	0	0	3	1	0	0	4	0	0	0	0	0	0	0	0	0	0	0	4	0	0	0	0	0	0	0	4		
62294	123	12	18	18	48	26	0	37	7	0	0	0	3	0	0	0	0	6	2	0	5	10	34	0	7	0	13	0	48	74	
NONE	935	769	83	46	16	21	0	0	0	0	0	0	0	0	0	0	0	0	0	0	0	0	0	0	0	0	0	898	37		
TOTAL	1758	886	247	189	255	178	1	526	212	1	3	2	15	1	0	0	0	6	7	4	7	22	196	0	8	0	38	51	0	1322	434

CFC #22 Child & Family Connections, Regional Office of Education #13, 660 W Noleman St, Centralia, IL 62801 - Nicole Van Hise

62812	31	3	4	1	10	13	0	3	28	0	0	0	0	0	0	0	6	0	0	0	0	22	0	0	0	0	0	0	8	23	
62822	16	0	0	4	6	6	0	0	16	0	0	0	0	0	0	0	0	4	0	0	0	12	0	0	0	0	0	0	4	12	
62836	6	0	0	1	5	0	0	0	6	0	0	0	0	0	0	0	0	1	0	0	0	5	0	0	0	0	0	1	5		
62865	2	0	1	1	0	0	0	0	2	0	0	0	0	2	0	0	0	0	0	0	0	0	0	0	0	0	0	2	0		
62883	1	1	0	0	0	0	0	0	1	0	0	0	0	0	0	0	1	0	0	0	0	0	0	0	0	0	0	1	0		
62884	13	0	2	4	5	2	0	0	13	0	0	0	0	0	0	0	3	0	0	0	2	10	0	0	0	0	2	0	6	7	
62890	14	1	1	4	6	2	0	0	14	0	0	0	0	0	0	0	2	4	0	0	0	8	0	0	0	0	0	0	6	8	
62891	3	0	2	1	0	0	0	0	3	0	0	0	0	0	0	0	3	0	0	0	0	0	0	0	0	0	0	3	0		
62896	75	7	2	3	28	35	0	0	75	0	0	0	1	0	5	0	0	7	0	1	0	1	32	2	29	0	0	12	29	12	63
62918	168	19	24	43	32	50	0	4	164	0	0	0	22	0	0	0	82	0	0	23	82	10	0	0	82	0	0	12	82	86	82
62948	10	2	2	4	2	0	0	2	8	0	0	0	0	0	6	0	0	0	0	1	1	0	0	1	1	0	0	0	8	2	
62951	1	1	0	0	0	0	0	0	1	0	0	0	0	0	0	0	0	1	0	0	0	0	0	0	0	0	0	1	0		
62959	143	9	13	17	40	62	2	113	30	0	0	6	4	0	2	0	13	0	0	7	19	4	0	1	8	0	0	4	8	39	104
62983	1	0	1	0	0	0	0	1	0	0	0	0	0	0	0	0	0	0	0	0	0	0	0	0	0	0	0	1	0		
62999	5	0	2	1	2	0	0	0	5	0	0	1	0	0	0	0	0	2	0	0	0	0	3	2	0	0	0	2	0	3	2

Screenings Reported by CFC/CPS/DCFS and ZIP / FY2019 Q1

Zip Code	Total Screened	Screenings of Children involved with DCFS						Not Referred	Total Referred	# of Children Ages 0 to 3 Referred to										# of Children Ages 3 to 5 Referred to						Sub-Totals								
		Ages (in Months)								In Intact Family Services	Children of Teen Wards	In Foster Care	LEA EI	LEA (ECSE)	EHS	PI (center-based)	Child Care Program	HV	Other Services	Multiple Services	Rescreening	LEA (ECSE)	PFA	HS	Child Care Program	Other HV	Multiple Services	Rescreening	Ages 0-35 mos.	Ages 36-61+ mos.				
NONE	535	443	48	28	6	10	0	0	0	0	0	0	0	0	0	0	0	0	0	0	0	0	0	0	0	0	0	0	0	0	0	0	519	16
TOTAL	1024	486	102	112	142	180	2	123	366	0	0	7	27	0	15	0	95	25	9	32	102	17	92	6	120	0	0	32	119	700	324			

CFC #23 Child & Family Connections, Wabash & Ohio Valley Special Education Dist., 800 S Division St, Norris City, IL 62869 - Charity Heifner

62410	6	0	0	0	4	2	0	0	6	0	0	0	0	0	0	0	0	0	0	0	0	6	0	0	0	2	0	0	0	0	0	6
62806	42	3	5	7	11	16	0	42	0	0	0	0	0	0	0	0	0	0	0	0	0	0	0	0	0	0	0	0	0	0	15	27
62821	27	0	0	0	17	10	0	0	27	0	0	0	0	0	0	0	0	0	0	0	0	27	0	0	0	10	1	3	0	0	27	
62835	24	2	3	2	12	5	0	0	24	0	0	0	0	0	0	0	0	0	0	0	0	15	0	0	0	8	1	1	7	17		
62837	80	4	1	4	43	28	0	23	57	0	0	0	2	0	0	0	0	0	1	1	0	0	54	0	0	0	8	5	9	9	71	
62844	11	0	0	6	5	0	0	11	0	0	0	0	0	0	0	0	0	0	0	0	0	11	0	0	0	3	2	1	6	5		
62850	1	0	0	0	1	0	0	0	1	0	0	0	0	0	0	0	0	0	0	0	0	1	0	0	0	0	0	0	0	0	1	
62859	5643	23	44	64	94	50	3	38	235	0	0	2	20	0	0	0	93	0	0	15	93	18	0	0	137	0	0	18	137	131	147	
62863	169	64	38	4	35	28	0	110	59	0	0	0	2	0	0	0	0	0	0	3	26	0	28	0	0	0	3	0	6	106	63	
62895	2	0	0	0	2	0	0	0	2	0	0	0	0	0	0	0	0	0	0	0	0	2	0	0	0	0	0	0	0	0	2	
62917	1	0	0	0	1	0	0	0	1	0	0	0	0	0	0	0	0	0	0	0	0	1	0	0	0	0	0	1	0	0	1	
62930	18	0	0	0	12	6	0	0	18	0	0	0	0	0	0	0	0	0	0	0	0	18	0	0	0	5	1	3	0	18		
62931	6	0	0	0	5	1	0	0	6	0	0	0	0	0	0	0	0	0	0	0	0	6	0	0	0	0	0	1	2	0	6	
62938	7	0	0	0	6	1	0	0	7	0	0	0	0	0	0	0	0	0	0	0	0	7	0	0	0	2	0	0	0	7		
62946	2919	19	23	40	75	101	8	177	84	0	0	0	1	0	0	0	21	0	0	0	21	2	32	0	31	0	7	3	36	82	184	
62954	26	0	0	0	16	10	0	0	26	0	0	0	0	0	0	0	0	0	0	0	0	26	0	0	0	13	0	1	0	26		
62984	39	0	10	5	13	11	0	39	0	0	0	0	0	0	0	0	0	0	0	0	0	0	0	0	0	0	0	0	0	15	24	
NONE	183	151	19	12	0	1	0	0	0	0	0	0	0	0	0	0	0	0	0	0	0	0	0	0	0	0	0	0	0	182	1	
TOTAL	9204	266	143	144	352	270	11	440	553	0	0	2	25	0	0	0	114	0	1	19	140	20	234	0	168	0	61	33	199	553	633	

CFC #24 Child & Family Connections, Archway, Inc., 2751 W Main, PO Box 1180, Carbondale, IL 62901-1180 - Deanna Cruse

62237	3	0	0	0	2	1	0	0	3	0	0	0	0	0	0	0	0	0	0	0	0	3	0	0	0	0	0	0	0	0	3
62274	5	0	0	1	2	2	0	1	4	0	0	0	0	0	0	0	0	0	0	0	0	4	0	0	0	0	0	0	1	4	
62832	11	3	0	0	5	3	0	4	7	0	0	0	0	0	0	0	0	0	0	0	0	6	0	0	0	0	0	1	3	8	
62901	271	20	42	39	74	89	7	246	25	0	0	3	1	0	0	2	0	10	0	1	0	0	8	0	1	1	2	0	0	101	170
62902	9	0	0	2	4	3	0	0	9	0	0	0	0	0	0	0	0	0	0	0	0	9	0	0	0	0	0	0	2	7	
62903	73	4	10	5	39	15	0	0	73	0	0	0	0	0	0	0	0	19	0	16	16	0	54	0	0	0	2	4	23	19	54
62916	8	0	0	0	5	3	0	0	8	0	0	0	0	0	0	0	0	0	0	0	0	1	6	0	0	0	0	0	1	0	8

Screenings Reported by CFC/CPS/DCFS and ZIP / FY2019 Q1

Zip Code	Total Screened	Ages (in Months)						Not Referred	Total Referred	Screenings of Children involved with DCFS			# of Children Ages 0 to 3 Referred to								# of Children Ages 3 to 5 Referred to					Sub-Totals					
		0-11	12-23	24-35	36-47	48-60	61+			In Intact Family Services	Children of Teen Wards	In Foster Care	LEA EI	LEA (ECSE)	EHS	PI (center-based)	Child Care Program	HV	Other Services	Multiple Services	Rescreening	LEA (ECSE)	PFA	HS	Child Care Program	Other HV Services	Multiple Services	Rescreening	Ages 0-35 mos.	Ages 36-61+ mos.	
62924	10	0	1	2	4	3	0	2	8	0	0	0	0	0	0	0	0	0	0	0	0	7	0	0	0	0	0	0	3	7	
62932	13	0	1	0	6	6	0	1	12	0	0	0	0	0	0	0	0	0	0	0	0	11	0	0	0	0	0	1	1	12	
62940	1	0	0	1	0	0	0	0	1	0	0	0	0	0	0	1	0	0	0	0	0	0	0	0	0	0	0	1	0		
62966	49	4	4	12	15	14	0	3	46	0	0	0	1	2	13	0	1	0	0	0	30	0	0	0	0	0	0	20	29		
NONE	269	217	49	2	1	0	0	0	0	0	0	0	0	0	0	0	0	0	0	0	0	0	0	0	0	0	0	268	1		
TOTAL	722	248	107	64	157	139	7	257	196	0	0	3	1	0	0	3	2	43	1	18	16	1	138	0	1	1	4	4	26	419	303

CFC #25 Child & Family Connections, Options & Advocacy for McHenry Co., 365 Millennium Dr, Ste A, Crystal Lake, IL 60012 - Karen Rios

60013	17	0	0	1	9	7	0	4	13	0	0	0	0	0	0	0	0	0	0	1	0	0	9	3	0	0	0	0	0	0	1	1	16
60014	301	66	81	78	34	42	0	5	293	0	0	0	224	0	0	0	0	0	0	1	0	14	0	0	0	0	3	0	6	225	76		
60033	114	13	21	16	41	22	1	70	44	2	0	1	3	0	0	3	0	0	0	0	0	5	0	0	0	0	0	0	0	50	64		
60042	24	0	6	14	4	0	0	22	2	0	0	0	0	0	0	0	0	0	0	0	0	0	0	0	0	0	0	0	20	4			
60050	33	0	0	0	15	17	1	17	16	0	0	0	0	0	0	0	0	0	0	0	7	9	0	0	0	0	0	0	0	0	33		
60051	13	0	0	3	7	1	2	0	4	4	0	0	0	0	0	0	0	0	0	0	3	3	0	0	0	0	0	0	1	3	10		
60097	10	0	0	0	7	3	0	0	10	0	0	0	0	0	0	0	0	0	0	0	0	10	0	0	0	0	0	0	0	0	10		
60098	102	1	2	0	49	50	0	5	97	1	0	5	2	0	0	0	0	3	5	0	0	0	92	0	0	0	0	0	0	3	99		
60152	23	0	0	1	10	12	0	1	22	0	0	0	0	0	0	0	0	0	0	0	0	22	0	0	0	0	0	0	1	22			
60156	57	0	0	4	43	10	0	3	57	0	0	0	0	0	0	0	0	0	1	0	24	22	0	0	0	0	0	0	4	53			
NONE	278	245	21	9	1	2	0	0	0	0	0	0	0	0	0	0	0	0	0	0	0	0	0	0	0	0	0	275	3				
TOTAL	972	325	131	126	220	166	4	127	558	7	0	6	229	0	0	3	0	3	6	2	0	57	166	0	0	0	3	0	8	582	390		

Chicago Health Department / Clinics, , , , -

NONE	3192	3013	153	26	0	0	0	0	0	0	0	0	0	0	0	0	0	0	0	0	0	0	0	0	0	0	0	0	0	0	3192	0
TOTAL	3192	3013	153	26	0	0	0	0	0	0	0	0	0	0	0	0	0	0	0	0	0	0	0	0	0	0	0	0	0	3192	0	

Chicago Public Schools, Office of Diverse Learner Supports & Services, 42 W Madison St, 2nd Floor, Chicago, IL 60602 - Elizabeth Keenan, PhD

60602	306	20	42	66	118	67	13	188	62	0	0	0	11	0	0	0	0	0	0	0	24	51	0	0	0	0	0	0	0	36	128	198
TOTAL	306	20	42	66	118	67	13	188	62	0	0	0	11	0	0	0	0	0	0	24	51	0	0	0	0	0	0	0	36	128	198	

DCFS/Erikson Institute Statewide, 451 North LaSalle Street, , Chicago, IL 60654 - Andria Goss

NONE	537	210	151	131	26	12	7	0	0	190	0	0	221	0	66	0	0	68	126	8	202	49	0	40	0	1	20	6	2	492	45
------	-----	-----	-----	-----	----	----	---	---	---	-----	---	---	-----	---	----	---	---	----	-----	---	-----	----	---	----	---	---	----	---	---	-----	----

Screenings Reported by CFC/CPS/DCFS and ZIP / FY2019 Q1

Zip Code	Total Screened	Ages (in Months)						Not Referred	Total Referred	Screenings of Children involved with DCFS			# of Children Ages 0 to 3 Referred to										# of Children Ages 3 to 5 Referred to				Sub-Totals				
		0-11	12-23	24-35	36-47	48-60	61+			In Intact	Children	In	LEA EI	LEA (ECSE)	EHS	PI (center-based)	Child Care Program	HV	Other Services	Multiple Services	Rescreening	LEA (ECSE)	PFA	HS	Child Care Program	HV	Other Services	Multiple Services	Rescreening	Ages 0-35 mos.	Ages 36-61+ mos.
										Family Services	of Teen Wards	Foster Care																			
TOTAL	537	210	151	131	26	12	7	0	0	190	0	0	221	0	66	0	0	68	126	8	202	49	0	40	0	1	20	6	2	492	45

Screenings Reported by CFC/CPS/DCFS and Month / FY2019 Q1

Month	Total Screened	Ages (in Months)							Not Referred	Total Referred	Screenings of Children involved with DCFS			# of Children Ages 0 to 3 Referred to								# of Children Ages 3 to 5 Referred to					Sub-Totals				
		0-11	12-23	24-35	36-47	48-60	61+	In Intact Family Services			Children of Teen Wards	In Foster Care	LEA EI	LEA (ECSE)	PI (center-based)	Child Care Program	Other HV Services	Multiple Services	Rescreening	LEA (ECSE)	PFA	HS	Child Care Program	Other HV Services	Multiple Services	Rescreening	Ages 0-35 mos.	Ages 36-61+ mos.			
CFC #01 Child & Family Connections, Access Services of Northern Illinois, 1752 Windsor Rd, Ste 102, PO Box 16390, Loves Park, IL 61132-6390 - Dee Dee Lowery																															
Jul-18	298	14	19	35	143	66	21	112	186	0	0	10	1	2	0	0	0	0	1	0	5	4	174	40	0	0	0	90	57	68	230
Aug-18	749	31	39	69	369	235	6	222	527	16	0	30	11	2	0	0	0	0	9	2	7	49	449	55	0	0	15	246	178	139	610
Sep-18	743	184	81	79	232	159	8	218	309	2	0	18	5	2	0	0	0	0	1	0	20	40	248	33	0	0	12	127	108	344	399
TOTAL	1790	229	139	183	744	460	35	552	1022	18	0	58	17	6	0	0	0	0	11	2	32	93	871	128	0	0	27	463	343	551	1239
CFC #02 Child & Family Connections, Lake County Health Department, 3010 Grand Ave, 2nd Floor, Waukegan, IL 60085 - Donna Musser																															
May-18	73	0	0	0	47	21	5	59	14	0	0	0	0	0	0	0	0	0	0	0	0	14	0	0	0	0	0	0	0	0	73
Jun-18	182	43	49	54	19	17	0	4	32	2	0	9	12	2	1	0	0	0	3	0	0	14	29	0	0	0	0	11	1	146	36
Jul-18	139	29	44	65	1	0	0	113	19	1	0	0	18	0	1	0	0	0	6	11	0	2	2	0	0	0	0	0	138	1	
Aug-18	221	53	54	53	37	24	0	161	60	2	0	7	21	1	3	0	0	0	3	6	0	5	31	0	0	0	8	2	3	160	61
Sep-18	836	605	91	84	29	27	0	152	45	1	0	3	17	2	1	0	0	0	1	1	0	12	15	0	0	0	1	3	3	780	56
TOTAL	1451	730	238	256	133	89	5	489	170	6	0	19	68	5	6	0	0	0	13	18	0	47	77	0	0	0	9	16	7	1224	227
CFC #03 Child & Family Connections, Regional Office of Education for Carroll, Jo Daviess, & Stephenson Co., 27 S State Ave, Ste 101, Freeport, IL 61032 - Angela Hodges																															
Jun-18	69	49	9	1	6	4	0	48	21	0	0	0	2	0	0	0	0	0	0	0	9	1	9	0	0	0	0	0	0	59	10
Jul-18	264	141	60	36	20	7	0	247	17	0	0	0	0	0	0	0	0	0	0	0	10	0	6	0	0	0	0	0	237	27	
Aug-18	391	168	51	26	92	47	0	278	113	0	0	2	0	3	0	0	0	0	0	0	7	69	93	0	0	0	8	1	0	245	139
Sep-18	761	477	88	54	75	67	0	304	64	0	0	0	6	1	0	0	1	0	0	1	1	17	26	6	13	0	3	12	3	619	142
TOTAL	1485	835	208	117	193	125	0	877	215	0	0	2	8	4	0	0	1	0	0	1	27	87	134	6	13	0	11	13	3	1160	318
CFC #04 Child & Family Connections, DayOne PACT, 1551 E Fabyan Pkwy, Geneva, IL 60134 - Ellana Mavromatis																															
Jul-18	184	20	28	22	66	38	10	177	7	0	0	0	6	0	0	0	0	0	0	0	0	0	0	0	0	0	0	0	70	114	
Aug-18	276	10	16	32	117	101	0	80	196	0	0	0	4	1	0	0	0	0	0	0	4	18	131	0	0	0	21	0	11	58	218
Sep-18	1118	869	52	36	73	88	0	98	129	0	0	0	2	1	0	0	0	0	0	0	12	18	77	0	0	0	13	0	14	957	161
TOTAL	1578	899	96	90	256	227	10	355	332	0	0	0	12	2	0	0	0	0	0	0	16	36	208	0	0	0	34	0	25	1085	493
CFC #05 Child & Family Connections, DayOne PACT, 750 Warrenville Rd, Ste 300, Lisle, IL 60532 - Marianne McGuire																															
Jun-18	9	5	2	2	0	0	0	9	0	0	0	0	0	0	0	0	0	0	0	0	0	0	0	0	0	0	0	0	9	0	
Jul-18	65	9	14	8	23	11	0	38	27	0	0	0	1	2	0	0	0	0	0	0	0	3	21	0	0	0	5	5	0	31	34
Aug-18	195	9	13	22	94	54	2	34	160	1	0	2	5	3	0	0	1	0	3	1	22	17	73	12	0	0	15	1	10	44	150
Sep-18	1073	598	74	92	151	156	2	203	248	1	0	0	12	11	0	0	0	1	3	2	28	45	127	3	0	0	3	1	18	764	309
TOTAL	1342	621	103	124	268	221	4	284	435	2	0	2	18	16	0	0	1	1	6	3	50	65	221	15	0	0	23	7	28	848	493
CFC #06 Child & Family Connections, Clearbrook, 1835 W Central Rd, Arlington Heights, IL 60005 - Jason Tietz																															
Apr-18	15	1	3	6	2	1	2	6	9	0	0	0	4	0	0	0	0	0	0	0	0	2	0	0	0	0	0	0	3	10	5

Screenings Reported by CFC/CPS/DCFS and Month / FY2019 Q1

Month	Total Screened	Ages (in Months)						Not Referred	Total Referred	Screenings of Children involved with DCFS			# of Children Ages 0 to 3 Referred to								# of Children Ages 3 to 5 Referred to					Sub-Totals						
		0-11	12-23	24-35	36-47	48-60	61+			In Intact Family Services	Children of Teen Wards	In Foster Care	LEA EI	LEA (ECSE)	PI (center-based)	Child Care Program	HV	Other Services	Multiple Services	Rescreening	LEA (ECSE)	PFA	HS	Child Care Program	Other HV Services	Multiple Services	Rescreening	Ages 0-35 mos.	Ages 36-61+ mos.			
May-18	29	0	0	5	15	7	2	21	8	0	0	0	0	1	0	0	0	0	0	0	0	0	0	0	0	0	0	0	4	5	24	
Jul-18	48	0	0	3	32	13	0	7	41	0	0	0	0	1	0	0	0	0	0	1	1	0	5	32	0	0	0	0	1	0	3	45
Aug-18	134	0	0	5	76	53	0	43	91	0	0	0	0	3	0	0	0	0	0	0	0	1	28	29	0	19	0	3	6	2	5	129
Sep-18	81	0	0	11	37	33	0	26	49	0	0	0	0	9	0	0	0	0	0	0	0	0	13	2	0	0	0	10	6	9	11	70
TOTAL	307	1	3	30	162	107	4	103	198	0	0	0	4	14	0	0	0	0	0	1	1	1	51	63	0	19	0	13	13	18	34	273
CFC #07 Child & Family Connections, Suburban Access, Inc. One Westbrook Corporate Ctr. Ste 640, Westchester, IL 60154 - JoAnn Alferink																																
Aug-18	97	0	0	1	40	56	0	25	72	0	0	0	0	1	0	0	0	0	0	0	0	0	26	45	0	0	0	0	0	0	1	96
Sep-18	483	350	28	9	30	64	2	2	101	0	0	0	4	4	0	0	0	0	0	0	0	0	12	78	0	0	0	3	0	1	387	96
TOTAL	580	350	28	10	70	120	2	27	173	0	0	0	4	5	0	0	0	0	0	0	0	38	123	0	0	0	3	0	1	388	192	
CFC #08 Child & Family Connections, Easter Seals of Metropolitan Chicago, 9455 S Hoyne Ave, Chicago, IL 60643 - Marlene Stroube																																
Jul-18	0	0	0	0	0	0	0	0	0	0	0	0	0	0	0	0	0	0	0	0	0	0	0	0	0	0	0	0	0	0	0	0
Aug-18	0	0	0	0	0	0	0	0	0	0	0	0	0	0	0	0	0	0	0	0	0	0	0	0	0	0	0	0	0	0	0	0
Sep-18	0	0	0	0	0	0	0	0	0	0	0	0	0	0	0	0	0	0	0	0	0	0	0	0	0	0	0	0	0	0	0	0
TOTAL	0	0	0	0	0	0	0	0	0	0	0	0	0	0	0	0	0	0	0	0	0	0	0	0	0	0	0	0	0	0	0	0
CFC #09 Child & Family Connections, Hektoen Institute for Medical Research, LLC, 5422 W Roosevelt Rd, Chicago, IL 60644 - Grace Ortiz																																
Sep-18	83	71	11	1	0	0	0	0	0	0	0	0	0	0	0	0	0	0	0	0	0	0	0	0	0	0	0	0	0	0	83	0
TOTAL	83	71	11	1	0	0	0	0	0	0	0	0	0	0	0	0	0	0	0	0	0	0	0	0	0	0	0	0	0	83	0	
CFC #13 Child & Family Connections, Regional Office of Education #26, 130 S Lafayette St, Ste 200, Macomb, IL 61455 - Chuck Farr																																
Jul-18	18	12	3	3	0	0	0	17	1	0	0	2	1	0	0	0	0	0	0	0	0	0	0	0	0	0	0	0	0	0	18	0
Aug-18	48	4	1	8	25	10	0	11	37	0	0	0	2	0	0	0	0	0	0	0	0	3	32	0	0	0	0	0	0	13	35	
Sep-18	508	432	40	22	12	2	0	10	8	2	0	1	1	0	0	0	0	1	0	0	0	0	6	0	0	0	0	0	0	494	14	
TOTAL	574	448	44	33	37	12	0	38	46	2	0	3	4	0	0	0	0	1	0	0	0	3	38	0	0	0	0	0	0	525	49	
CFC #14 Child & Family Connections, 3000 W Rohmann Ave., West Peoria, IL 61604 - Michelle Harr																																
Jul-18	38	0	1	5	17	15	0	1	37	3	0	2	0	0	0	0	0	0	1	0	4	5	24	0	0	0	3	0	2	6	32	
Aug-18	370	7	10	14	204	132	3	120	250	12	0	9	0	2	0	0	0	0	1	0	3	10	178	0	0	0	30	23	25	31	339	
Sep-18	638	304	67	60	126	68	13	84	166	1	0	7	8	1	0	7	0	0	3	0	11	14	77	0	2	0	28	6	23	431	207	
TOTAL	1046	311	78	79	347	215	16	205	453	16	0	18	8	3	0	7	0	0	5	0	18	29	279	0	2	0	61	29	50	468	578	
CFC #15 Child & Family Connections, Services of Will, Grundy, & Kankakee Counties, Inc., 2300 Glenwood Ave, Joliet, IL 60435 - Rachel Cimino																																
Jul-18	181	34	23	27	52	45	0	80	101	0	0	7	9	0	0	0	0	0	0	0	21	9	46	0	0	0	0	0	16	84	97	
Aug-18	836	47	31	71	430	255	2	157	679	0	0	11	28	0	0	0	0	4	4	0	31	132	413	1	0	0	11	2	56	149	687	

Screenings Reported by CFC/CPS/DCFS and Month / FY2019 Q1

Month	Total Screened	Ages (in Months)						Not Referred	Total Referred	Screenings of Children involved with DCFS			# of Children Ages 0 to 3 Referred to								# of Children Ages 3 to 5 Referred to					Sub-Totals							
		0-11	12-23	24-35	36-47	48-60	61+			In Intact Family Services	Children of Teen Wards	In Foster Care	LEA EI	LEA (ECSE)	PI EHS	Child Care Program	HV	Other Services	Multiple Services	Rescreening	LEA (ECSE)	PFA	HS	Child Care Program	Other HV Services	Multiple Services	Rescreening	Ages 0-35 mos.	Ages 36-61+ mos.				
Sep-18	1534	472	108	85	409	453	7	501	499	0	0	2	23	12	0	0	0	0	0	0	0	27	143	206	4	22	0	15	0	47	665	869	
TOTAL	2551	553	162	183	891	753	9	738	1279	0	0	20	60	12	0	0	0	0	4	4	0	79	284	665	5	22	0	26	2	119	898	1653	
CFC #16 Child & Family Connections, 201 W Springfield Ave, Ste 508 & 509, Champaign, IL 61820 - Chris Johnson																																	
Sep-18	560	481	56	14	6	3	0	0	0	0	0	0	0	0	0	0	0	0	0	0	0	0	0	0	0	0	0	0	0	0	0	551	9
TOTAL	560	481	56	14	6	3	0	0	0	0	0	0	0	0	0	0	0	0	0	0	0	0	0	0	0	0	0	0	0	0	551	9	
CFC #17 Child & Family Connections, ROE of Adams/Pike Counties, 510 Maine St, Ste 615, Quincy, IL 62301 - Michelle Schwanke																																	
Aug-18	199	4	6	31	93	63	1	158	41	4	0	0	3	0	0	0	0	3	0	3	3	4	0	0	0	0	0	0	0	32	41	157	
Sep-18	520	258	33	25	104	93	7	155	51	3	0	0	0	0	0	0	0	0	0	0	2	3	0	0	0	0	0	0	0	46	316	204	
TOTAL	719	262	39	56	197	156	8	313	92	7	0	0	3	0	0	0	0	3	0	3	5	7	0	0	0	0	0	0	0	78	357	361	
CFC #18 Child & Family Connections, Sangamon Co. Public Health Department, 2833 S Grand Ave, E, Springfield, IL 62703 - Lisa McGlothlin																																	
Feb-18	13	0	0	4	6	3	0	13	0	0	0	0	0	0	0	0	0	0	0	0	0	0	0	0	0	0	0	0	0	0	4	9	
Jul-18	22	0	0	3	13	6	0	18	3	0	0	1	0	0	0	0	0	0	0	0	0	3	0	0	0	0	0	0	3	3	19		
Aug-18	45	0	0	0	24	21	0	0	45	3	0	2	0	0	0	0	0	0	0	0	0	0	31	0	14	0	0	12	12	0	45		
Sep-18	415	335	51	28	1	0	0	0	39	0	0	0	6	0	0	0	0	39	0	3	1	0	0	0	0	0	0	0	0	414	1		
TOTAL	495	335	51	35	44	30	0	31	87	3	0	3	6	0	0	0	0	39	0	3	1	3	31	0	14	0	0	12	15	421	74		
CFC #19 Child & Family Connections, Macon Co. Community Mental Health Board, 132 S Water St, Ste 604, Decatur, IL 62523 - Debbie Floyd																																	
Jul-18	18	6	8	4	0	0	0	18	0	0	0	2	0	0	0	0	0	0	0	0	0	0	0	0	0	0	0	0	0	18	0		
Aug-18	245	7	14	55	86	82	0	30	215	0	0	0	5	2	0	0	0	0	5	0	0	37	171	3	0	0	13	17	0	76	168		
Sep-18	523	416	79	16	5	7	0	0	0	0	0	0	0	0	0	0	0	0	0	0	0	0	0	0	0	0	0	0	0	511	12		
TOTAL	786	429	101	75	91	89	0	48	215	0	0	2	5	2	0	0	0	0	5	0	0	37	171	3	0	0	13	17	0	605	180		
CFC #20 Child & Family Connections, Community Support Systems, 1901 S 4th St, Ste 209, Effingham, IL 62401 - Rita Wahl																																	
Aug-18	42	0	0	4	27	10	0	2	40	0	0	1	0	1	0	0	0	0	2	0	0	5	30	0	0	0	1	0	1	4	37		
Sep-18	397	317	43	19	10	8	0	0	16	2	0	0	0	2	0	0	0	0	0	0	0	3	7	0	0	0	5	2	0	379	18		
TOTAL	439	317	43	23	37	18	0	2	56	2	0	1	0	3	0	0	0	0	2	0	0	8	37	0	0	0	6	2	1	383	55		
CFC #21 Child & Family Connections, Regional Office of Education #13, 4 Eagle Center, Ste 4, O'Fallon, IL 62269 - Terri Kampwerth																																	
May-18	8	3	4	1	0	0	0	8	0	0	0	0	0	0	0	0	0	0	0	0	0	0	0	0	0	0	0	0	0	8	0		
Jun-18	3	0	1	1	1	0	0	3	0	0	0	0	0	0	0	0	0	0	0	0	0	0	0	0	0	0	0	0	0	2	1		
Jul-18	3	0	3	0	0	0	0	2	1	0	0	0	1	0	0	0	0	0	0	0	0	0	0	0	0	0	0	0	0	3	0		
Aug-18	134	1	4	10	72	46	0	32	96	0	0	2	0	0	0	0	0	0	1	0	0	4	87	0	1	0	24	23	0	15	118		

Screenings Reported by CFC/CPS/DCFS and Month / FY2019 Q1

Month	Total Screened	Ages (in Months)						Not Referred	Total Referred	Screenings of Children involved with DCFS			# of Children Ages 0 to 3 Referred to							# of Children Ages 3 to 5 Referred to					Sub-Totals						
		0-11	12-23	24-35	36-47	48-60	61+			In Intact Family Services	Children of Teen Wards	In Foster Care	LEA EI	LEA (ECSE)	PI (center-based)	Child Care Program	HV	Other Services	Multiple Services	Rescreening	LEA (ECSE)	PFA	HS	Child Care Program	Other HV	Multiple Services	Rescreening	Ages 0-35 mos.	Ages 36-61+ mos.		
Sep-18	1610	882	235	177	182	132	1	481	115	1	3	0	14	1	0	0	0	6	6	4	7	18	109	0	7	0	14	28	0	1294	315
TOTAL	1758	886	247	189	255	178	1	526	212	1	3	2	15	1	0	0	0	6	7	4	7	22	196	0	8	0	38	51	0	1322	434

CFC #22 Child & Family Connections, Regional Office of Education #13, 660 W Noleman St. Centralia, IL 62801 - Nicole Van Hise

Apr-18	104	18	21	31	10	24	0	0	104	0	0	0	18	0	0	0	70	0	0	18	70	6	0	0	34	0	0	6	34	70	34
May-18	44	0	0	0	19	25	0	0	44	0	0	0	0	0	0	0	0	0	0	0	0	3	0	0	44	0	0	3	44	0	44
Jun-18	2	1	1	0	0	0	0	2	0	0	0	0	0	0	0	0	0	0	0	0	0	0	0	0	0	0	0	0	2	0	
Jul-18	117	8	11	27	41	29	1	22	95	0	0	1	5	0	8	0	12	0	7	5	12	6	50	3	16	0	0	15	16	46	71
Aug-18	103	9	14	21	32	27	0	9	94	0	0	0	3	0	7	0	13	15	2	8	14	2	32	2	23	0	0	4	22	44	59
Sep-18	654	450	55	33	40	75	1	90	29	0	0	6	1	0	0	0	0	10	0	1	6	0	10	1	3	0	0	4	3	538	116
TOTAL	1024	486	102	112	142	180	2	123	366	0	0	7	27	0	15	0	95	25	9	32	102	17	92	6	120	0	0	32	119	700	324

CFC #23 Child & Family Connections, Wabash & Ohio Valley Special Education Dist., 800 S Division St. Norris City, IL 62869 - Charity Heifner

Jul-18	8293	45	41	32	69	77	11	102	168	0	0	0	8	0	0	0	45	0	0	11	58	15	0	0	107	0	0	15	107	118	157
Aug-18	343	50	58	66	111	58	0	136	207	0	0	0	8	0	0	0	57	0	0	6	70	5	87	0	59	0	34	11	67	174	169
Sep-18	568	171	44	46	172	135	0	202	178	0	0	2	9	0	0	0	12	0	1	2	12	0	147	0	2	0	27	7	25	261	307
TOTAL	9204	266	143	144	352	270	11	440	553	0	0	2	25	0	0	0	114	0	1	19	140	20	234	0	168	0	61	33	199	553	633

CFC #24 Child & Family Connections, Archway, Inc., 2751 W Main, PO Box 1180, Carbondale, IL 62901-1180 - Deanna Cruse

Jul-18	79	8	6	13	29	23	0	21	58	0	0	0	0	0	0	2	2	2	1	2	0	1	47	0	0	0	1	0	3	27	52
Aug-18	123	13	21	14	53	22	0	35	88	0	0	0	0	0	0	0	0	13	0	12	12	0	74	0	1	0	2	0	19	48	75
Sep-18	520	227	80	37	75	94	7	201	50	0	0	3	1	0	0	1	0	28	0	4	4	0	17	0	0	1	1	4	4	344	176
TOTAL	722	248	107	64	157	139	7	257	196	0	0	3	1	0	0	3	2	43	1	18	16	1	138	0	1	1	4	4	26	419	303

CFC #25 Child & Family Connections, Options & Advocacy for McHenry Co., 365 Millennium Dr. Ste A, Crystal Lake, IL 60012 - Karen Rios

Jul-18	175	32	50	51	36	6	0	70	105	2	0	1	81	0	0	3	0	0	0	2	0	1	11	0	0	0	0	0	0	133	42
Aug-18	215	20	28	23	83	58	3	21	188	0	0	2	70	0	0	0	0	0	0	0	0	19	92	0	0	0	1	0	6	71	144
Sep-18	582	273	53	52	101	102	1	36	265	5	0	3	78	0	0	0	0	3	6	0	0	37	63	0	0	0	2	0	2	378	204
TOTAL	972	325	131	126	220	166	4	127	558	7	0	6	229	0	0	3	0	3	6	2	0	57	166	0	0	0	3	0	8	582	390

Chicago Health Department / Clinics, -

Sep-18	3192	3013	153	26	0	0	0	0	0	0	0	0	0	0	0	0	0	0	0	0	0	0	0	0	0	0	0	0	0	0	3192	0
TOTAL	3192	3013	153	26	0	0	0	0	0	0	0	0	0	0	0	0	0	0	0	0	0	0	0	0	0	0	0	0	0	3192	0	

Chicago Public Schools, Office of Diverse Learner Supports & Services, 42 W Madison St. 2nd Floor, Chicago, IL 60602 - Elizabeth Keenan, PhD

Sep-18	306	20	42	66	118	67	13	188	62	0	0	0	11	0	0	0	0	0	0	0	24	51	0	0	0	0	0	0	0	36	128	198
--------	-----	----	----	----	-----	----	----	-----	----	---	---	---	----	---	---	---	---	---	---	---	----	----	---	---	---	---	---	---	---	----	-----	-----

Screenings Reported by CFC/CPS/DCFS and Month / FY2019 Q1

Month	Total Screened	Ages (in Months)						Not Referred	Total Referred	Screenings of Children involved with DCFS			# of Children Ages 0 to 3 Referred to								# of Children Ages 3 to 5 Referred to						Sub-Totals					
		0-11	12-23	24-35	36-47	48-60	61+			In Intact Family Services	Children of Teen Wards	In Foster Care	LEA EI	(ECSE)	EHS	PI (center-based)	Child Care Program	HV	Other Services	Multiple Services	Rescreening	LEA (ECSE)	PFA	HS	Child Care Program	Other HV Services	Multiple Services	Rescreening	Ages 0-35 mos.	Ages 36-61+ mos.		
TOTAL	306	20	42	66	118	67	13	188	62	0	0	0	11	0	0	0	0	0	0	24	51	0	0	0	0	0	0	0	0	36	128	198
DCFS/Erikson Institute Statewide, 451 North LaSalle Street, Chicago, IL 60654 - Andria Goss																																
Apr-18	85	27	27	22	3	3	3	0	0	0	0	0	65	0	0	0	0	0	23	6	36	13	0	22	0	0	15	4	0	76	9	
May-18	98	39	23	27	4	4	1	0	0	0	0	0	43	0	0	0	0	0	27	1	39	13	0	2	0	0	0	2	2	89	9	
Jun-18	86	34	30	17	2	2	1	0	0	0	0	0	0	0	1	0	0	0	27	1	29	13	0	1	0	0	0	0	0	81	5	
Jul-18	136	59	37	27	8	3	2	0	0	58	0	0	63	0	17	0	0	14	28	0	64	5	0	7	0	1	2	0	0	123	13	
Aug-18	59	28	16	11	4	0	0	0	0	59	0	0	22	0	16	0	0	25	8	0	15	1	0	4	0	0	2	0	0	55	4	
Sep-18	73	23	18	27	5	0	0	0	0	73	0	0	28	0	32	0	0	29	13	0	19	4	0	4	0	0	1	0	0	68	5	
TOTAL	537	210	151	131	26	12	7	0	0	190	0	0	221	0	66	0	0	68	126	8	202	49	0	40	0	1	20	6	2	492	45	

Screenings Reported by CFC/CPS/DCFS and Agencies Represented / FY2019 Q1

Agency Type	Total Screened	Screenings of Children involved with DCFS							# of Children Ages 0 to 3 Referred to										# of Children Ages 3 to 5 Referred to					Sub-Totals							
		Ages (in Months)						Not Referred	Total Referred	Family Services	Children of Teen Wards	In Foster Care	LEA EI	LEA (ECSE)	PI (EHS based)	Child Care Program	HV	Other Services	Multiple Services	Rescreening	LEA (ECSE)	PFA	HS	Child Care Program	Other HV Services	Multiple Services	Rescreening	Ages 0-35 mos.	Ages 36-61+ mos.		
		0-11	12-23	24-35	36-47	48-60	61+																								
CFC #01 Child & Family Connections, Access Services of Northern Illinois, 1752 Windsor Rd, Ste 102, PO Box 16390, Loves Park, IL 61132-6390 - Dee Dee Lowery																															
CC	8	7	0	1	0	0	0	8	0	0	0	0	0	0	0	0	0	0	0	0	0	0	0	0	0	0	0	8	0		
DCFS	33	10	12	10	1	0	0	0	0	0	0	0	0	0	0	0	0	0	0	0	0	0	0	0	0	0	32	1			
EI	0	0	0	0	0	0	0	0	0	0	0	0	0	0	0	0	0	0	0	0	0	0	0	0	0	0	0	0	0		
FCM	183	148	25	10	0	0	0	0	0	0	0	0	0	0	0	0	0	0	0	0	0	0	0	0	0	0	183	0			
HS/EHS	201	22	49	53	41	36	0	140	61	0	0	14	15	0	0	0	0	0	0	0	0	0	0	0	0	7	124	77			
HV	7	0	2	5	0	0	0	7	0	0	0	0	0	0	0	0	0	0	0	0	0	0	0	0	0	0	7	0			
LEA	1358	42	51	104	702	424	35	397	961	18	0	44	2	6	0	0	0	0	11	2	1	85	871	128	0	0	27	463	336	197	1161
PAT	7	0	2	5	0	0	0	7	0	0	0	0	0	0	0	0	0	0	0	0	0	0	0	0	0	0	7	0			
PI	0	0	0	0	0	0	0	0	0	0	0	0	0	0	0	0	0	0	0	0	0	0	0	0	0	0	0	0	0	0	
CFC #02 Child & Family Connections, Lake County Health Department, 3010 Grand Ave, 2nd Floor, Waukegan, IL 60085 - Donna Musser																															
CFC	581	163	195	223	0	0	0	392	43	6	0	17	68	2	6	0	0	0	13	18	0	0	0	0	0	0	0	581	0		
DCFS	36	9	10	12	3	2	0	0	0	0	0	0	0	0	0	0	0	0	0	0	0	0	0	0	0	0	31	5			
EI	581	163	195	223	0	0	0	392	43	6	0	17	68	2	6	0	0	0	13	18	0	0	0	0	0	0	581	0			
FCM	603	558	33	12	0	0	0	0	0	0	0	0	0	0	0	0	0	0	0	0	0	0	0	0	0	0	603	0			
LEA	231	0	0	9	130	87	5	97	127	0	0	2	0	3	0	0	0	0	0	0	0	47	77	0	0	0	9	16	7	9	222
CFC #03 Child & Family Connections, Regional Office of Education for Carroll, Jo Daviess, & Stephenson Co., 27 S State Ave, Ste 101, Freeport, IL 61032 - Angela Hodges																															
CC	562	272	122	55	62	44	0	556	6	0	0	0	0	0	0	0	0	0	0	0	0	0	0	0	0	0	449	106			
DCFS	31	10	8	9	2	2	0	0	0	0	0	0	0	0	0	0	0	0	0	0	0	0	0	0	0	0	27	4			
FCM	899	594	138	65	62	33	0	531	6	0	0	0	0	0	0	0	0	0	0	0	0	0	0	0	0	0	797	95			
HD	230	194	29	7	0	0	0	200	30	0	0	0	4	0	0	0	0	0	0	0	26	0	0	0	0	0	230	0			
HS/EHS	47	2	4	4	24	13	0	40	7	0	0	0	1	0	0	0	0	0	0	0	0	4	0	0	0	0	10	37			
HV	75	26	24	24	1	0	0	71	4	0	0	0	3	0	0	0	0	0	0	0	0	1	0	0	0	0	74	1			
LEA	246	23	23	30	104	66	0	75	171	0	0	2	3	4	0	0	1	0	0	1	1	83	133	6	13	0	11	13	3	76	170
WIC	537	263	117	55	62	33	0	531	6	0	0	0	0	0	0	0	0	0	0	0	0	0	0	0	0	0	435	95			
CFC #04 Child & Family Connections, DayOne PACT, 1551 E Fabyan Pkwy, Geneva, IL 60134 - Ellana Mavromatis																															
CC	51	2	22	14	7	6	0	26	25	0	0	0	1	0	0	0	0	0	0	0	11	0	13	0	0	0	0	0	0	38	13
CFC	42	3	12	9	8	10	0	39	3	0	0	0	3	0	0	0	0	0	0	0	0	0	0	0	0	0	24	18			
DCFS	20	6	6	7	1	0	0	0	0	0	0	0	0	0	0	0	0	0	0	0	0	0	0	0	0	0	19	1			
FCM	871	854	10	7	0	0	0	0	0	0	0	0	0	0	0	0	0	0	0	0	0	0	0	0	0	0	871	0			
HD	14	0	4	9	0	1	0	12	2	0	0	0	0	0	0	0	0	0	0	0	0	0	0	0	0	0	13	1			

Screenings Reported by CFC/CPS/DCFS and Agencies Represented / FY2019 Q1

Agency Type	Total Screened	Ages (in Months)							Not Referred	Total Referred	Screenings of Children involved with DCFS			# of Children Ages 0 to 3 Referred to								# of Children Ages 3 to 5 Referred to					Sub-Totals					
		0-11	12-23	24-35	36-47	48-60	61+	In Intact			Children of Teen	In Foster Care	LEA EI	LEA (ECSE)	PI (center-based)	Child Care Program	HV	Other Services	Multiple Services	Rescreening	LEA (ECSE)	PFA	HS	Child Care Program	HV	Other Services	Multiple Services	Rescreening	Ages 0-35 mos.	Ages 36-61+ mos.		
HS/EHS	94	8	30	24	13	9	10	81	13	0	0	0	2	0	0	0	0	0	0	0	0	0	0	0	0	0	0	0	0	0	62	32
HV	21	6	9	6	0	0	0	19	2	0	0	0	2	0	0	0	0	0	0	0	0	0	0	0	0	0	0	0	0	21	0	
LEA	440	0	1	17	221	201	0	147	293	0	0	0	3	2	0	0	0	0	0	0	0	0	0	0	34	0	25	18	422			
MFP	12	1	3	2	6	0	0	10	2	0	0	0	1	0	0	0	0	0	0	0	0	0	0	0	0	0	0	0	6	6		
PAT	56	21	22	13	0	0	0	51	5	0	0	0	2	0	0	0	0	0	0	0	0	0	0	0	0	0	0	0	56	0		
CFC #05 Child & Family Connections, DayOne PACT, 750 Warrenville Rd, Ste 300, Lisle, IL 60532 - Marianne McGuire																																
CC	32	3	12	17	0	0	0	21	11	0	0	0	3	0	0	0	0	0	0	0	0	0	0	0	0	0	0	0	0	32	0	
DCFS	20	2	7	9	2	0	0	0	0	0	0	0	0	0	0	0	0	0	0	0	0	0	0	0	0	0	0	0	18	2		
EI	22	4	9	5	3	1	0	13	9	0	0	0	6	3	0	0	0	0	0	0	0	0	0	0	0	0	0	0	18	4		
FCM	602	572	21	9	0	0	0	0	0	0	0	0	0	0	0	0	0	0	0	0	0	0	0	0	0	0	0	0	602	0		
HS/EHS	32	3	12	17	0	0	0	21	11	0	0	0	3	0	0	0	0	0	0	0	0	0	0	0	0	0	0	0	32	0		
HV	40	16	13	11	0	0	0	0	40	2	0	0	4	0	0	0	1	1	0	3	37	0	0	0	0	0	0	0	40	0		
LEA	626	24	41	73	263	220	4	250	375	0	0	2	5	13	0	0	0	0	5	0	6	65	221	15	0	0	23	7	28	138	487	
CFC #06 Child & Family Connections, Clearbrook, 1835 W Central Rd, Arlington Heights, IL 60005 - Jason Tietz																																
LEA	307	1	3	30	162	107	4	103	198	0	0	0	4	14	0	0	0	0	0	1	1	1	51	63	0	19	0	13	13	18	34	273
CFC #07 Child & Family Connections, Suburban Access, Inc, One Westbrook Corporate Ctr, Ste 640, Westchester, IL 60154 - JoAnn Alferink																																
FCM	379	350	28	1	0	0	0	0	0	0	0	0	0	0	0	0	0	0	0	0	0	0	0	0	0	0	0	0	379	0		
LEA	201	0	0	9	70	120	2	27	173	0	0	0	4	5	0	0	0	0	0	0	0	38	123	0	0	0	3	0	1	9	192	
CFC #08 Child & Family Connections, Easter Seals of Metropolitan Chicago, 9455 S Hoyne Ave, Chicago, IL 60643 - Marlene Stroube																																
LEA	0	0	0	0	0	0	0	0	0	0	0	0	0	0	0	0	0	0	0	0	0	0	0	0	0	0	0	0	0	0	0	
CFC #09 Child & Family Connections, Hektoen Institute for Medical Research, LLC, 5422 W Roosevelt Rd, Chicago, IL 60644 - Grace Ortiz																																
FCM	83	71	11	1	0	0	0	0	0	0	0	0	0	0	0	0	0	0	0	0	0	0	0	0	0	0	0	0	83	0		
CFC #13 Child & Family Connections, Regional Office of Education #26, 130 S Lafayette St, Ste 200, Macomb, IL 61455 - Chuck Farr																																
DCFS	44	22	6	8	6	2	0	0	0	0	0	0	0	0	0	0	0	0	0	0	0	0	0	0	0	0	0	0	36	8		
FCM	446	408	29	9	0	0	0	0	0	0	0	0	0	0	0	0	0	0	0	0	0	0	0	0	0	0	0	0	446	0		
LEA	41	0	0	2	29	10	0	0	41	1	0	0	2	0	0	0	0	0	0	0	3	36	0	0	0	0	0	0	2	39		
PI	43	18	9	14	2	0	0	38	5	1	0	3	2	0	0	0	0	1	0	0	0	2	0	0	0	0	0	0	41	2		

Screenings Reported by CFC/CPS/DCFS and Agencies Represented / FY2019 Q1

Agency Type	Total Screened	Ages (in Months)							Not Referred	Total Referred	Screenings of Children involved with DCFS			# of Children Ages 0 to 3 Referred to								# of Children Ages 3 to 5 Referred to						Sub-Totals			
		0-11	12-23	24-35	36-47	48-60	61+	In Intact			Children In	Foster	LEA EI	PI (center-based)	Child Care Program	Other HV Services	Multiple Services	Rescreening	LEA (ECSE)	PFA	HS	Child Care Program	Other HV Services	Multiple Services	Rescreening	Ages 0-35 mos.	Ages 36-61+ mos.				
CFC #14 Child & Family Connections, 3000 W Rohmann Ave., West Peoria, IL 61604 - Michelle Harr																															
CFC	59	5	14	19	13	8	0	37	22	2	0	2	4	1	0	0	0	0	0	0	0	0	0	0	0	0	0	0	0	38	21
DCFS	71	27	22	14	6	2	0	0	0	0	0	0	0	0	0	0	0	0	0	0	0	0	0	0	0	0	0	0	63	8	
EI	1	0	1	0	0	0	0	0	1	0	0	0	1	0	0	0	0	0	0	0	0	0	0	0	0	0	0	0	1	0	
FCM	317	273	30	14	0	0	0	0	0	0	0	0	0	0	0	0	0	0	0	0	0	0	0	0	0	0	0	0	317	0	
HS/EHS	20	4	7	0	5	4	0	15	5	0	0	1	0	0	0	0	0	0	0	0	0	0	0	0	0	0	0	11	9		
LEA	495	2	4	32	262	179	16	87	408	14	0	15	3	2	0	7	0	0	5	0	3	24	279	0	2	0	56	26	41	38	457
MFP	83	0	0	0	61	22	0	66	17	0	0	0	0	0	0	0	0	0	0	0	0	0	0	0	0	5	3	9	0	83	
CFC #15 Child & Family Connections, Services of Will, Grundy, & Kankakee Counties, Inc., 2300 Glenwood Ave, Joliet, IL 60435 - Rachel Cimino																															
DCFS	76	15	24	16	13	8	0	0	0	0	0	0	0	0	0	0	0	0	0	0	0	0	0	0	0	0	0	0	55	21	
EI	65	12	21	27	2	3	0	45	20	0	0	1	18	0	0	0	0	0	0	0	2	0	0	0	0	0	0	0	60	5	
FCM	543	459	68	16	0	0	0	0	85	0	0	17	8	0	0	0	0	0	0	0	77	0	0	0	0	0	0	0	543	0	
HS/EHS	187	22	10	13	61	77	4	147	40	0	0	0	2	10	0	0	0	0	0	0	28	0	0	0	0	0	0	0	45	142	
HV	82	32	25	25	0	0	0	58	24	0	0	0	24	0	0	0	0	0	0	0	0	0	0	0	0	0	0	82	0		
LEA	1598	13	14	86	815	665	5	488	1110	0	0	2	8	2	0	0	0	4	4	0	2	254	665	5	22	0	26	2	119	113	1485
CFC #16 Child & Family Connections, 201 W Springfield Ave, Ste 508 & 509, Champaign, IL 61820 - Chris Johnson																															
DCFS	49	12	21	7	6	3	0	0	0	0	0	0	0	0	0	0	0	0	0	0	0	0	0	0	0	0	0	0	40	9	
FCM	511	469	35	7	0	0	0	0	0	0	0	0	0	0	0	0	0	0	0	0	0	0	0	0	0	0	0	0	511	0	
CFC #17 Child & Family Connections, ROE of Adams/Pike Counties, 510 Maine St, Ste 615, Quincy, IL 62301 - Michelle Schwanke																															
DCFS	38	7	12	8	6	5	0	0	0	0	0	0	0	0	0	0	0	0	0	0	0	0	0	0	0	0	0	0	27	11	
FCM	276	248	20	8	0	0	0	0	0	0	0	0	0	0	0	0	0	0	0	0	0	0	0	0	0	0	0	0	276	0	
HV	25	7	7	10	0	0	0	22	3	0	0	0	3	0	0	0	0	3	0	3	0	0	0	0	0	0	0	24	0		
LEA	380	0	0	30	191	151	8	291	89	7	0	0	0	0	0	0	0	0	0	0	5	7	0	0	0	0	0	78	30	350	
CFC #18 Child & Family Connections, Sangamon Co. Public Health Department, 2833 S Grand Ave, E, Springfield, IL 62703 - Lisa McGlothlin																															
DCFS	32	11	11	9	1	0	0	0	0	0	0	0	0	0	0	0	0	0	0	0	0	0	0	0	0	0	0	0	31	1	
FCM	344	316	19	9	0	0	0	0	0	0	0	0	0	0	0	0	0	0	0	0	0	0	0	0	0	0	0	0	344	0	
LEA	80	0	0	7	43	30	0	31	48	3	0	3	0	0	0	0	0	0	0	0	3	31	0	14	0	0	12	15	7	73	
PI	39	8	21	10	0	0	0	0	39	0	0	0	6	0	0	0	0	39	0	3	1	0	0	0	0	0	0	0	39	0	
CFC #19 Child & Family Connections, Macon Co. Community Mental Health Board, 132 S Water St, Ste 604, Decatur, IL 62523 - Debbie Floyd																															
DCFS	60	11	29	8	5	7	0	0	0	0	0	0	0	0	0	0	0	0	0	0	0	0	0	0	0	0	0	0	48	12	

Screenings Reported by CFC/CPS/DCFS and Agencies Represented / FY2019 Q1

Agency Type	Total Screened	Ages (in Months)							Not Referred	Total Referred	Screenings of Children involved with DCFS			# of Children Ages 0 to 3 Referred to								# of Children Ages 3 to 5 Referred to					Sub-Totals						
		0-11	12-23	24-35	36-47	48-60	61+	In Intact			Children of Teen Wards	In Foster Care	LEA EI	LEA (ECSE)	EHS	PI (center-based)	Child Care Program	HV	Other Services	Multiple Services	Rescreening	LEA (ECSE)	PFA	HS	Child Care Program	HV	Other Services	Multiple Services	Rescreening	Ages 0-35 mos.	Ages 36-61+ mos.		
		FCM	463	405	50	8	0	0			0	0	0	0	0	0	0	0	0	0	0	0	0	0	0	0	0	0	0	0	0	0	0
HS/EHS	52	13	22	17	0	0	0	48	4	0	0	2	4	0	0	0	0	0	0	0	0	0	0	0	0	0	0	0	0	52	0		
LEA	211	0	0	42	86	82	0	0	211	0	0	0	1	2	0	0	0	0	0	0	5	0	0	37	171	3	0	0	13	17	0	42	168
CFC #20 Child & Family Connections, Community Support Systems, 1901 S 4th St, Ste 209, Effingham, IL 62401 - Rita Wahl																																	
DCFS	40	15	11	7	3	4	0	0	0	0	0	0	0	0	0	0	0	0	0	0	0	0	0	0	0	0	0	0	0	0	33	7	
FCM	341	302	32	7	0	0	0	0	0	0	0	0	0	0	0	0	0	0	0	0	0	0	0	0	0	0	0	0	0	341	0		
LEA	58	0	0	9	34	14	0	2	56	2	0	1	0	3	0	0	0	0	0	2	0	0	8	37	0	0	0	6	2	1	9	48	
CFC #21 Child & Family Connections, Regional Office of Education #13, 4 Eagle Center, Ste 4, O'Fallon, IL 62269 - Terri Kampwerth																																	
DCFS	129	36	33	23	16	21	0	0	0	0	0	0	0	0	0	0	0	0	0	0	0	0	0	0	0	0	0	0	0	92	37		
FCM	806	733	50	23	0	0	0	0	0	0	0	0	0	0	0	0	0	0	0	0	0	0	0	0	0	0	0	0	0	806	0		
HV	65	19	24	20	1	0	0	56	9	1	3	0	5	0	0	0	0	0	0	0	0	0	4	0	0	0	0	0	0	63	1		
LEA	400	16	18	65	179	120	1	121	194	0	0	2	1	1	0	0	0	6	7	4	2	22	196	0	8	0	38	51	0	99	300		
PI	70	19	29	19	2	0	0	58	12	0	0	0	8	0	0	0	0	0	0	0	5	0	0	0	0	0	0	0	0	67	2		
WIC	332	75	111	51	58	37	0	328	4	0	0	0	4	0	0	0	0	0	0	0	0	0	0	0	0	0	0	0	0	237	95		
CFC #22 Child & Family Connections, Regional Office of Education #13, 660 W Noleman St, Centralia, IL 62801 - Nicole Van Hise																																	
CC	243	24	33	58	50	77	1	23	220	0	0	0	26	0	0	0	95	0	0	30	101	15	0	0	119	0	0	28	119	115	128		
DCFS	71	27	14	14	6	10	0	0	0	0	0	0	0	0	0	0	0	0	0	0	0	0	0	0	0	0	0	0	0	55	16		
FCM	464	416	34	14	0	0	0	0	0	0	0	0	0	0	0	0	0	0	0	0	0	0	0	0	0	0	0	0	0	464	0		
HS/EHS	109	3	3	9	35	58	1	86	23	0	0	6	1	0	15	0	0	0	0	2	1	0	3	4	1	0	0	0	0	15	94		
HV	39	16	18	4	1	0	0	14	25	0	0	0	0	0	0	0	25	0	0	0	0	0	0	0	0	0	0	0	38	1			
LEA	98	0	0	13	50	35	0	0	98	0	0	1	0	0	0	0	0	0	9	0	0	2	89	2	0	0	0	4	0	13	85		
CFC #23 Child & Family Connections, Wabash & Ohio Valley Special Education Dist., 800 S Division St, Norris City, IL 62869 - Charity Heifner																																	
CC	281	1	6	4	5	8	4	0	28	0	0	0	0	0	0	0	11	0	0	0	11	2	0	0	17	0	0	2	17	11	17		
CFC	2424	1	4	5	3	7	4	0	24	0	0	0	0	0	0	10	0	0	0	10	0	0	0	14	0	0	0	14	10	14			
DCFS	21	5	9	6	0	1	0	0	0	0	0	0	0	0	0	0	0	0	0	0	0	0	0	0	0	0	0	0	20	1			
DT	0	0	0	0	0	0	0	0	0	0	0	0	0	0	0	0	0	0	0	0	0	0	0	0	0	0	0	0	0	0	0		
FCM	162	146	10	6	0	0	0	0	0	0	0	0	0	0	0	0	0	0	0	0	0	0	0	0	0	0	0	0	0	162	0		
HS/EHS	366	30	38	55	102	141	0	336	25	0	0	0	1	0	0	0	0	0	0	0	0	15	0	0	0	9	1	5	123	243			
LEA	5853	21	41	68	242	113	3	38	445	0	0	2	22	0	0	0	93	0	1	16	93	18	219	0	137	0	52	30	163	130	358		
WIC	97	62	35	0	0	0	0	66	31	0	0	0	2	0	0	0	0	0	0	3	26	0	0	0	0	0	0	0	0	97	0		

Screenings Reported by CFC/CPS/DCFS and Screening Tools Utilized / FY2019 Q1

Screening Tool	Total Screened	Ages (in Months)							Not Referred	Screenings of Children involved with DCFS			# of Children Ages 0 to 3 Referred to								# of Children Ages 3 to 5 Referred to								
		0-11	12-23	24-35	36-47	48-60	61+	Total Referred		In Intact Family Services	Children of Teen Wards	In Foster Care	LEA EI	LEA (ECSE)	PI (EHS)	Child Care Program	Other HV Services	Multiple Services	Rescreening	LEA (ECSE)	PFA	HS	Child Care Program	Other HV Services	Multiple Services	Rescreening			
CFC #01	Child & Family Connections, Access Services of Northern Illinois, 1752 Windsor Rd, Ste 102, PO Box 16390, Loves Park, IL 61132-6390 - Dee Dee Lowery																												
ASQ	0	0	0	0	0	0	0	0	0	0	0	0	0	0	0	0	0	0	0	0	0	0	0	0	0	0	0		
ASQ-3	1282	71	102	143	571	387	8	365	917	18	0	55	17	0	0	0	0	0	7	1	31	66	809	128	0	0	22	460	339
ASQ:SE	922	35	49	81	444	305	8	212	710	18	0	39	1	0	0	0	0	0	0	0	0	35	707	128	0	0	0	446	326
BRIG	19	0	0	0	15	4	0	0	19	0	0	0	0	0	0	0	0	0	0	0	0	13	3	0	0	0	0	0	3
DIAL	19	0	0	0	15	4	0	0	19	0	0	0	0	0	0	0	0	0	0	0	0	13	3	0	0	0	0	0	3
DIAL-3	0	0	0	0	0	0	0	0	0	0	0	0	0	0	0	0	0	0	0	0	0	0	0	0	0	0	0	0	0
DIAL-4	437	7	5	28	247	123	27	226	211	0	0	3	1	5	0	0	0	0	11	2	1	41	161	0	0	0	5	14	2
ESI	158	22	48	52	20	16	0	105	53	0	0	14	15	0	0	0	0	0	0	0	0	31	0	0	0	0	0	0	7
ESI-R	915	35	47	76	444	305	8	205	710	18	0	39	1	0	0	0	0	0	0	0	0	35	707	128	0	0	0	446	326
PLS	4	0	0	1	2	1	0	1	3	0	0	0	0	1	0	0	0	0	0	0	0	1	0	0	0	0	0	0	1
PLS-4	1	0	0	0	1	0	0	0	1	0	0	0	0	0	0	0	0	0	0	0	0	0	0	0	0	0	0	0	1
PQ	5	0	0	0	4	1	0	3	2	0	0	0	0	0	0	0	0	0	0	0	0	2	0	0	0	0	0	0	0
Speed DIAL-4	29	0	0	1	16	12	0	1	28	0	0	2	0	1	0	0	0	0	0	0	0	4	0	0	0	0	22	3	4
CFC #02	Child & Family Connections, Lake County Health Department, 3010 Grand Ave, 2nd Floor, Waukegan, IL 60085 - Donna Musser																												
ASQ-3	581	163	195	223	0	0	0	392	43	6	0	17	68	2	6	0	0	0	13	18	0	0	0	0	0	0	0	0	0
DIAL-4	231	0	0	9	130	87	5	97	127	0	0	2	0	3	0	0	0	0	0	0	0	47	77	0	0	0	9	16	7
CFC #03	Child & Family Connections, Regional Office of Education for Carroll, Jo Daviess, & Stephenson Co., 27 S State Ave, Ste 101, Freeport, IL 61032 - Angela Hodges																												
ASQ	579	290	124	62	63	33	0	570	9	0	0	0	2	0	0	0	0	0	0	0	0	1	0	0	0	0	0	0	0
ASQ-3	334	204	55	28	23	24	0	296	38	0	0	0	6	0	0	0	0	0	0	0	26	4	0	0	0	0	0	0	0
ASQ:SE	91	3	1	6	49	32	0	9	82	0	0	1	0	4	0	0	0	0	1	1	75	76	2	0	0	11	13	0	
ASQ:SE-2	68	23	23	22	0	0	0	65	3	0	0	0	3	0	0	0	0	0	0	0	0	0	0	0	0	0	0	0	0
BOEHM	84	0	0	4	48	32	0	3	81	0	0	1	0	4	0	0	0	0	1	1	75	75	2	0	0	11	13	0	
BRIG	84	0	0	4	48	32	0	3	81	0	0	1	0	4	0	0	0	0	1	1	75	75	2	0	0	11	13	0	
BRIG-3	6	0	0	1	3	2	0	2	4	0	0	0	0	0	0	0	0	0	0	0	1	0	0	0	0	0	0	3	
DIAL-4	117	2	4	6	70	35	0	45	72	0	0	1	1	0	0	0	0	0	0	0	11	58	0	0	0	0	0	0	
MCHAT	35	24	6	5	0	0	0	33	2	0	0	0	2	0	0	0	0	0	0	0	0	0	0	0	0	0	0	0	0
Play-Based	18	0	0	1	7	10	0	0	18	0	0	0	0	0	0	0	1	0	0	0	0	0	4	13	0	0	0	0	
CFC #04	Child & Family Connections, DayOne PACT, 1551 E Fabyan Pkwy, Geneva, IL 60134 - Ellana Mavromatis																												
ASQ	76	6	6	9	21	24	10	52	24	0	0	0	1	0	0	0	0	0	0	0	5	14	0	0	0	0	0	0	3
ASQ-3	503	30	73	58	192	150	0	272	231	0	0	0	8	1	0	0	0	0	0	0	15	26	150	0	0	0	10	0	22

Screenings Reported by CFC/CPS/DCFS and Screening Tools Utilized / FY2019 Q1

Screening Tool	Total Screened	Ages (in Months)							Not Referred	Total Referred	Screenings of Children involved with DCFS			# of Children Ages 0 to 3 Referred to								# of Children Ages 3 to 5 Referred to									
		0-11	12-23	24-35	36-47	48-60	61+	In Intact Family Services			Children of Teen Wards	In Foster Care	LEA EI	LEA (ECSE)	EHS	PI (center-based)	Child Care Program	HV	Other Services	Multiple Services	Rescreening	LEA (ECSE)	PFA	HS	Child Care Program	Other HV Services	Multiple Services	Rescreening			
ASQ:SE	100	6	9	13	37	35	0	39	61	0	0	0	3	1	0	0	0	0	0	0	0	0	4	11	21	0	0	0	9	0	15
ASQ:SE-2	125	23	37	22	27	16	0	85	40	0	0	0	3	0	0	0	0	0	0	0	0	11	4	14	0	0	0	0	0	8	
BAT	41	0	0	7	20	14	0	5	36	0	0	0	1	1	0	0	0	0	0	0	0	3	6	13	0	0	0	9	0	0	
DENVER	47	6	6	9	8	8	10	46	1	0	0	0	1	0	0	0	0	0	0	0	0	0	0	0	0	0	0	0	0	0	
DIAL	19	0	0	2	8	9	0	14	5	0	0	0	0	0	0	0	0	0	0	0	0	0	5	0	0	0	0	0	0	0	
DIAL-4	11	0	0	2	5	4	0	8	3	0	0	0	0	1	0	0	0	0	0	0	0	1	0	1	0	0	0	1	0	0	
Play-Based	16	0	0	0	6	10	0	6	10	0	0	0	0	0	0	0	0	0	0	0	0	0	5	1	0	0	0	0	0	3	
PLS-5	43	0	0	0	27	16	0	17	26	0	0	0	0	0	0	0	0	0	0	0	0	0	4	14	0	0	0	0	0	8	
Speed DIAL-4	77	0	0	3	31	43	0	8	69	0	0	0	0	1	0	0	0	0	0	0	0	1	0	44	0	0	0	24	0	0	
CFC #05 Child & Family Connections, DayOne PACT, 750 Warrenville Rd, Ste 300, Lisle, IL 60532 - Marianne McGuire																															
ASQ	70	0	0	1	45	23	0	14	56	0	0	1	0	0	0	0	0	0	0	0	0	1	4	31	12	0	0	13	6	0	
ASQ-3	503	47	75	96	133	151	1	246	257	2	0	0	18	13	0	0	1	1	3	3	47	39	107	1	0	0	7	0	23		
ASQ:SE	132	23	38	40	18	11	2	94	37	0	0	0	4	2	0	0	0	0	0	0	0	0	0	31	0	0	0	0	0		
ASQ:SE-2	94	9	17	23	28	17	0	38	56	0	0	0	4	1	0	0	0	0	1	0	20	15	10	0	0	0	0	0	5		
CIP	36	0	0	6	22	7	1	9	27	0	0	0	0	1	0	0	0	0	3	0	2	8	10	0	0	0	0	0	3		
DIAL	24	0	0	0	18	6	0	10	14	0	0	1	0	0	0	0	0	0	0	0	0	0	3	10	0	0	0	1	0	0	
DIAL-4	87	0	0	0	53	34	0	23	64	0	0	0	0	0	0	0	0	0	0	0	0	0	15	47	2	0	0	5	5	0	
Play-Based	4	0	0	0	4	0	0	0	4	0	0	0	0	0	0	0	0	0	0	0	0	0	4	0	0	0	0	0	0	0	
Speed DIAL-4	28	0	0	0	13	15	0	2	26	0	0	0	0	0	0	0	0	0	0	0	0	0	0	23	0	0	0	2	1	2	
CFC #06 Child & Family Connections, Clearbrook, 1835 W Central Rd, Arlington Heights, IL 60005 - Jason Tietz																															
ASQ	36	0	0	2	21	13	0	8	28	0	0	0	0	2	0	0	0	0	0	0	0	0	2	2	0	19	0	3	0	0	
ASQ-2	60	0	0	0	28	32	0	36	24	0	0	0	0	0	0	0	0	0	0	0	0	0	0	0	0	0	0	3	5	10	
ASQ-3	76	0	0	12	38	26	0	12	58	0	0	0	0	10	0	0	0	0	0	0	0	0	29	18	0	0	0	0	6	1	
ASQ:SE-2	6	0	0	0	4	2	0	0	0	0	0	0	0	0	0	0	0	0	0	0	0	0	0	0	0	0	0	0	0	0	
BRIG	5	0	0	0	2	3	0	4	1	0	0	0	0	0	0	0	0	0	0	0	0	0	0	0	0	0	0	0	1	0	
DIAL	50	1	3	13	20	9	4	29	21	0	0	0	4	1	0	0	0	0	0	0	0	1	8	0	0	0	0	0	0	7	
DIAL-4	84	0	0	5	57	22	0	13	71	0	0	0	0	3	0	0	0	0	0	1	1	0	10	45	0	0	0	10	1	0	
ESI	64	0	0	0	30	34	0	38	26	0	0	0	0	0	0	0	0	0	0	0	0	0	2	0	0	0	0	3	5	10	
Speed DIAL-4	72	0	0	0	41	31	0	17	55	0	0	0	0	0	0	0	0	0	0	0	0	0	17	18	0	19	0	0	6	1	
TPBA	6	0	0	0	4	2	0	0	0	0	0	0	0	0	0	0	0	0	0	0	0	0	0	0	0	0	0	0	0	0	

Screenings Reported by CFC/CPS/DCFS and Screening Tools Utilized / FY2019 Q1

Screening Tool	Total Screened	Ages (in Months)							Not Referred	Total Referred	Screenings of Children involved with DCFS			# of Children Ages 0 to 3 Referred to								# of Children Ages 3 to 5 Referred to							
		0-11	12-23	24-35	36-47	48-60	61+	In Intact Family Services			Children of Teen Wards	In Foster Care	LEA EI	LEA (ECSE)	PI (EHS)	Child Care Program	HV	Other Services	Multiple Services	Rescreening	LEA (ECSE)	PFA	HS	Child Care Program	Other HV Services	Multiple Services	Rescreening		
BRIG-3	149	2	5	12	54	72	4	109	40	0	0	0	2	10	0	0	0	0	0	0	0	28	0	0	0	0	0	0	
DIAL	119	0	5	6	60	47	1	6	113	0	0	0	5	0	0	0	0	0	0	0	0	37	47	0	21	0	0	0	3
DIAL-4	734	15	5	65	384	264	1	174	560	0	0	2	0	2	0	0	0	0	0	0	0	163	383	1	1	0	2	2	9
CFC #17 Child & Family Connections, ROE of Adams/Pike Counties, 510 Maine St, Ste 615, Quincy, IL 62301 - Michelle Schwanke																													
ASQ-3	25	7	7	10	0	0	0	22	3	0	0	0	3	0	0	0	0	3	0	3	0	0	0	0	0	0	0	0	
ASQ:SE	25	7	7	10	0	0	0	22	3	0	0	0	3	0	0	0	0	3	0	3	0	0	0	0	0	0	0	0	
DIAL	380	0	0	30	191	151	8	291	89	7	0	0	0	0	0	0	0	0	0	0	5	7	0	0	0	0	0	78	
CFC #18 Child & Family Connections, Sangamon Co. Public Health Department, 2833 S Grand Ave. E, Springfield, IL 62703 - Lisa McGlothlin																													
ASQ	39	8	21	10	0	0	0	0	39	0	0	0	6	0	0	0	0	39	0	3	1	0	0	0	0	0	0	0	
BRIG	25	0	0	0	13	12	0	0	25	3	0	1	0	0	0	0	0	0	0	0	0	0	11	0	14	0	0	0	
BRIG-3	20	0	0	0	11	9	0	0	20	0	0	1	0	0	0	0	0	0	0	0	0	0	20	0	0	0	0	12	12
DIAL-4	35	0	0	7	19	9	0	31	3	0	0	1	0	0	0	0	0	0	0	0	0	3	0	0	0	0	0	3	
CFC #19 Child & Family Connections, Macon Co. Community Mental Health Board, 132 S Water St, Ste 604, Decatur, IL 62523 - Debbie Floyd																													
ASQ	52	13	22	17	0	0	0	48	4	0	0	2	4	0	0	0	0	0	0	0	0	0	0	0	0	0	0	0	
ASQ:SE	52	13	22	17	0	0	0	48	4	0	0	2	4	0	0	0	0	0	0	0	0	0	0	0	0	0	0	0	
BRIG	211	0	0	42	86	82	0	0	211	0	0	0	1	2	0	0	0	0	5	0	0	37	171	3	0	0	13	17	0
HELP	52	13	22	17	0	0	0	48	4	0	0	2	4	0	0	0	0	0	0	0	0	0	0	0	0	0	0	0	
CFC #20 Child & Family Connections, Community Support Systems, 1901 S 4th St, Ste 209, Effingham, IL 62401 - Rita Wahl																													
ASQ-3	27	0	0	0	20	7	0	0	27	0	0	1	0	0	0	0	0	0	0	0	0	2	25	0	0	0	0	0	
BRIG	23	0	0	6	10	6	0	0	23	0	0	0	0	1	0	0	0	0	2	0	0	3	12	0	0	0	6	2	0
DIAL	8	0	0	3	4	1	0	2	6	2	0	0	0	2	0	0	0	0	0	0	0	3	0	0	0	0	0	1	
DIAL-4	27	0	0	0	20	7	0	0	27	0	0	1	0	0	0	0	0	0	0	0	0	2	25	0	0	0	0	0	
CFC #21 Child & Family Connections, Regional Office of Education #13, 4 Eagle Center, Ste 4, O'Fallon, IL 62269 - Terri Kampwerth																													
ASQ	183	11	14	16	90	52	0	73	31	1	3	0	7	0	0	0	0	6	2	0	2	16	40	0	7	0	14	33	0
ASQ-3	508	106	149	116	85	51	0	451	57	0	0	0	8	0	0	0	0	0	0	0	4	4	41	0	0	0	0	0	
ASQ:SE	301	39	48	70	91	52	0	184	38	1	3	0	10	0	0	0	0	6	2	0	6	16	40	0	7	0	14	33	0
ASQ:SE-2	14	0	0	3	5	6	0	1	13	0	0	0	0	0	0	0	0	0	0	0	0	0	13	0	0	0	0	0	0
BRIG	11	0	1	5	1	3	0	0	11	0	0	0	0	1	0	0	0	0	4	4	1	0	5	0	0	0	5	5	0
BRIG-3	4	0	0	0	3	1	0	0	4	0	0	0	0	0	0	0	0	0	0	0	0	0	4	0	0	0	0	0	0
DIAL-4	161	0	0	6	86	68	1	46	109	0	0	2	0	0	0	0	0	0	1	0	0	8	88	0	1	0	31	31	0

Screenings Reported by CFC/CPS/DCFS and Screening Tools Utilized / FY2019 Q1

Screening Tool	Total Screened	Ages (in Months)							Not Referred	Total Referred	Screenings of Children involved with DCFS			# of Children Ages 0 to 3 Referred to								# of Children Ages 3 to 5 Referred to							
		0-11	12-23	24-35	36-47	48-60	61+	In Intact Family Services			Children of Teen Wards	In Foster Care	LEA EI	LEA (ECSE)	EHS	PI (center-based)	Child Care Program	HV	Other Services	Multiple Services	Rescreening	LEA (ECSE)	PFA	HS	Child Care Program	Other HV Services	Multiple Services	Rescreening	
ESP	33	0	1	3	21	8	0	0	33	0	0	0	1	0	0	0	0	0	0	0	0	4	28	0	0	0	0	0	
Play-Based	79	0	0	6	47	26	0	0	0	0	0	0	0	0	0	0	0	6	2	0	1	10	34	0	7	0	0	13	0
PLS-5	11	0	1	5	1	3	0	0	11	0	0	0	0	1	0	0	0	0	4	4	1	0	5	0	0	0	5	5	0
Speed DIAL-4	24	0	0	0	16	8	0	0	24	0	0	0	0	0	0	0	0	0	0	0	0	0	24	0	0	0	2	2	0
CFC #22 Child & Family Connections, Regional Office of Education #13, 660 W Noleman St, Centralia, IL 62801 - Nicole Van Hise																													
ASQ	62	19	23	10	8	2	0	37	25	0	0	0	0	0	0	0	0	25	0	0	0	0	0	0	0	0	0	0	0
ASQ-3	243	24	31	61	51	75	1	0	243	0	0	0	27	0	15	0	95	0	0	32	102	15	3	4	120	0	0	28	119
BRIG	121	0	0	4	43	73	1	86	35	0	0	7	0	0	0	0	0	0	0	0	0	2	35	2	0	0	0	4	0
BRIG-3	63	0	0	9	34	20	0	0	63	0	0	0	0	0	0	0	0	0	9	0	0	0	54	0	0	0	0	0	0
CFC #23 Child & Family Connections, Wabash & Ohio Valley Special Education Dist., 800 S Division St, Norris City, IL 62869 - Charity Heifner																													
ASQ	470	92	73	55	108	142	0	402	63	0	0	0	3	0	0	0	0	0	0	3	26	0	22	0	0	0	11	1	5
ASQ-3	898	16	31	42	57	32	4	27	150	0	0	2	17	0	0	0	60	0	0	12	60	17	0	0	85	0	0	17	85
ASQ:SE-2	7439	7	20	27	44	32	7	0	137	0	0	0	3	0	0	0	54	0	0	3	54	3	0	0	83	0	0	3	83
DENVER II	0	0	0	0	0	0	0	0	0	0	0	0	0	0	0	0	0	0	0	0	0	0	0	0	0	0	0	0	0
DIAL-4	569	30	38	57	240	204	0	336	228	0	0	0	3	0	0	0	0	0	1	1	0	0	216	0	0	0	56	11	30
ESI	11	0	0	6	5	0	0	11	0	0	0	0	0	0	0	0	0	0	0	0	0	0	11	0	0	0	3	2	1
Speed DIAL-4	366	30	38	55	102	141	0	336	25	0	0	0	1	0	0	0	0	0	0	0	0	0	15	0	0	0	9	1	5
CFC #24 Child & Family Connections, Archway, Inc., 2751 W Main, PO Box 1180, Carbondale, IL 62901-1180 - Deanna Cruse																													
ASQ	136	26	45	47	17	1	0	110	26	0	0	0	1	0	0	1	0	23	0	0	0	0	0	0	0	1	0	0	0
ASQ-3	72	4	10	4	39	15	0	0	72	0	0	0	0	0	0	0	0	18	0	16	16	0	54	0	0	0	2	4	23
ASQ:SE-2	72	4	10	4	39	15	0	0	72	0	0	0	0	0	0	0	0	18	0	16	16	0	54	0	0	0	2	4	23
BRIG	308	12	29	36	107	119	5	218	90	0	0	3	1	0	0	2	2	3	0	2	0	1	77	0	0	1	0	0	3
BRIG-3	20	0	2	3	9	4	2	9	11	0	0	0	0	0	0	0	0	0	1	0	0	0	7	0	1	0	2	0	0
Hearing	83	11	28	28	16	0	0	80	3	0	0	0	1	0	0	0	0	1	0	0	0	0	0	0	0	1	0	0	0
CFC #25 Child & Family Connections, Options & Advocacy for McHenry Co., 365 Millennium Dr, Ste A, Crystal Lake, IL 60012 - Karen Rios																													
ASQ	356	79	102	93	46	35	1	92	262	2	0	1	227	0	0	3	0	0	0	0	0	18	14	0	0	0	2	0	0
ASQ-3	176	1	8	18	90	59	0	27	149	1	0	5	2	0	0	0	0	3	5	1	0	17	117	0	0	0	0	0	0
ASQ:SE	73	0	0	4	45	23	1	17	56	0	0	0	0	0	0	0	0	0	0	1	0	24	24	0	0	0	0	0	0
ASQ:SE-2	102	1	2	0	49	50	0	5	97	1	0	5	2	0	0	0	0	3	5	0	0	0	92	0	0	0	0	0	0
CIP	17	0	0	0	13	4	0	3	17	0	0	0	0	0	0	0	0	0	0	0	0	7	7	0	0	0	0	0	0

Screenings Reported by CFC/CPS/DCFS and Screening Tools Utilized / FY2019 Q1

Screening Tool	Total Screened	Ages (in Months)						Not Referred	Total Referred	Screenings of Children involved with DCFS			# of Children Ages 0 to 3 Referred to								# of Children Ages 3 to 5 Referred to							
		0-11	12-23	24-35	36-47	48-60	61+			In Intact Family Services	Children of Teen Wards	In Foster Care	LEA EI	LEA (ECSE)	EHS	PI (center-based)	Child Care Program	HV	Other Services	Multiple Services	Rescreening	LEA (ECSE)	PFA	HS	Child Care Program	Other HV Services	Multiple Services	Rescreening
		DIAL-4	145	0	0	6	70			66	3	5	130	4	0	0	0	0	0	0	0	1	1	0	15	28	0	0
ESP	18	0	0	0	6	12	0	5	11	0	0	0	0	0	0	0	0	0	0	0	11	0	0	0	0	2	0	0
PRO-3	18	0	0	0	6	12	0	5	11	0	0	0	0	0	0	0	0	0	0	0	11	0	0	0	0	2	0	0

Chicago Public Schools, Office of Diverse Learner Supports & Services, 42 W Madison St, 2nd Floor, Chicago, IL 60602 - Elizabeth Keenan, PhD

ASQ	306	20	42	66	118	67	13	188	62	0	0	0	11	0	0	0	0	0	0	24	51	0	0	0	0	0	0	36
ESI-P	306	20	42	66	118	67	13	188	62	0	0	0	11	0	0	0	0	0	0	24	51	0	0	0	0	0	0	36
ESI-R	306	20	42	66	118	67	13	188	62	0	0	0	11	0	0	0	0	0	0	24	51	0	0	0	0	0	0	36

DCFS/Erikson Institute Statewide, 451 North LaSalle Street, Chicago, IL 60654 - Andria Goss

ASQ	190	79	52	46	13	0	0	0	0	190	0	0	64	0	65	0	0	68	25	0	55	6	0	11	0	1	5	0	0
ASQ:SE	190	79	52	46	13	0	0	0	0	190	0	0	64	0	65	0	0	68	25	0	55	6	0	11	0	1	5	0	0
ESI-P	190	79	52	46	13	0	0	0	0	190	0	0	64	0	65	0	0	68	25	0	55	6	0	11	0	1	5	0	0